



# ADP-100 Graphical User Interface

## Interactive Product Screenshots

The purpose of this document is to present to the user an example of what the XP-100 (a.k.a. ADP-100 Graphical User Interface) looks like through the use of screenshots. These screenshots are interactive with the help of mouse clicks and depict what the user will encounter when using this program. Some features of the program simply cannot be depicted in this demonstration. Therefore, this document should not be used to give a true feeling for how the program works, but rather an idea for how it looks.

Each screen has “clickable” areas that are used to access other screens, which in turn access yet more screens. In the actual program, most of these areas also have a keyboard shortcut that can be used instead of a mouse click, but that is beyond the capabilities of this document.

The first screen that the user will encounter is what is referred to as “The Main Operating Screen”. From here the user can click on several areas to gain access to different features. For instance, clicking on the gray area that says “ESC for Main Menu” in the upper right hand corner will show the “Main Menu” screen. Each screen from that point on will have a menu that is used to go to a new screen, as well as to go back to the previous screen. Other areas of the main operating screen can be clicked on as well.

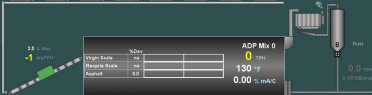
To begin the demonstration, simply click anywhere on this page or go to the next page and start clicking on the areas you wish to explore. Questions about this document as well as the XP-100 program itself can be directed at SYSTEMS Equipment Corp. Technical Support at 563-568-6387 or through email at [techsupport@systemsequipment.com](mailto:techsupport@systemsequipment.com).

Material	Virgin Agg	Virgin Agg	Virgin Agg	Virgin Agg	Virgin Agg	Virgin Agg	Virgin Agg	Virgin Agg
% Wet	2.5	2.4	2.8	2.5	2.5	2.8	2.4	2.8
dryTPH	0	0	0	0	0	0	0	0
% Blend	0.0	0.0	0.0	0.0	0.0	0.0	0.0	0.0



**Production Targets**

Mix:	ADP Mix 0
Aggregate Rates	0 TPH
Production Total	0 T
A/C Recirc. Rate	9.0 TPH



**Current Total 1's**

(Current) ADP Mix 0	280
ADP Mix 0	280.0

**Fuel Flow**

0.0 gpt  
1.3 gpm

Message Area



Material	Virgin Agg	Virgin Agg	Virgin Agg	Virgin Agg	Virgin Agg	Virgin Agg	Virgin Agg	Virgin Agg
% Wet	2.5	2.4	2.8	2.5	2.5	2.8	2.4	2.8
dryTPH	0	0	0	0	0	0	0	0
% Blend	0.0	0.0	0.0	0.0	0.0	0.0	0.0	0.0



Parameter Monitored	Alarm Limit	Time to Shutdown
Virgin Scale	10.0 %	0 sec
Recycle Scale	10.0 %	0 sec
Asphalt Blend	+5.0 %	0 sec
Divert Error		0 sec
Feeder Error	25.0 %	0 sec

**Esc - Escape**

**F10 - Edit**

2.5 % Wet  
-1 dryTPH

ADP Mix 0	
Virgin Scale	na
Recycle Scale	na
Asphalt	0.0

0 TPH  
131 °F  
0.00 % m/A/C

Material	Recycle Agg	Recycle Agg
%Wet/%mAC	2.0/14.00	2.0/13.75
dryTPH	0.0	0
% Blend	0.00	0.0

2.0 % Wet  
+1 dryTPH



Current Total 1's

(Current) ADP Mix 0	280
ADP Mix 0	280.0

Fuel Flow

0.0 gpt  
1.3 gpm

Message Area

Asphalt Tank Num	70-22	94-22
Sp. Gravity	1.032	1.034
Inventory	500	645
Mix Unit Empty	NA	15176

48 °F  
9.0 TPH  
0.00 % m/A/C

Water 0.00 TPH

Material	Virgin Agg	Virgin Agg	Virgin Agg	Virgin Agg	Virgin Agg	Virgin Agg	Virgin Agg	Virgin Agg
% Wet	2.5	2.4	2.8	2.5	2.5	2.8	2.4	2.8
dryTPH	0	0	0	0	0	0	0	0
% Blend	0.0	0.0	0.0	0.0	0.0	0.0	0.0	0.0



Parameter Monitored	Alarm Limit	Time to Shutdown
Virgin Scale	10.0 %	0 sec
Recycle Scale	10.0 %	0 sec
Asphalt Blend	+5.0 %	0 sec
Divert Error		0 sec
Feeder Error	25.0 %	0 sec

F10 - Confirm Changes  
Esc - Cancel Changes

2.5 % Wet  
-1 dryTPH

**ADP Mix 0**

0 TPH

132 °F

0.00 % m/A/C

%Dry	
Virgin Scale	na
Recycle Scale	na
Asphalt	0.0

Material	Recycle Agg	Recycle Agg
%Wet/ %mAC	2.0/14.00	2.0/13.75
dryTPH	0.0	0
% Blend	0.00	0.0

2.0 % Wet  
+ dryTPH



Current Total 1's

(Current) ADP Mix 0	280
ADP Mix 0	280.0

Fuel Flow  
0.0 gpt  
1.3 gpm

Message Area



Material	Virgin Agg	Virgin Agg	Virgin Agg	Virgin Agg	Virgin Agg	Virgin Agg
% Wet	2.5	2.4	2.8	2.5	2.5	2.5
dryTPH	0	0	0	0	0	0
% Blend	0.0	0.0	0.0	0.0	0.0	0.0

Asphalt

Name:

Specific Gravity:

Info:

Comment:

**F10 - Confirm Add**

**Esc - Cancel Add**



ADP Mix 0

0 TPH

131 °F

0.00 % m/A/C

	%Dry		
Virgin Scale	na		
Recycle Scale	na		
Asphalt	0.0		



Material	Recycle Agg	Recycle Agg	
%Wet/ %m/A/C	2.0 / 4.00	2.0 / 3.75	2.5 % Wet
dryTPH	0.0	0	+ dryTPH
% Blend	0.00	0.0	

Current Total 1's

(Current) ADP Mix 0	280
ADP Mix 0	280.0

Fuel Flow

0.0 gpt

1.3 gpm

Message Area



Material	Virgin Agg	Virgin Agg	Virgin Agg	Virgin Agg	Virgin Agg	Virgin Agg
% Wet	2.5	2.4	2.8	2.5	2.5	2.5
dryTPH	0	0	0	0	0	0
% Blend	0.0	0.0	0.0	0.0	0.0	0.0

Asphalt

Name:

Specific Gravity:

Info:

Comment:

**F10 - Confirm Changes**

**Esc - Cancel Changes**

2.5 % Wet  
-1 dryTPH

ADP Mix 0		%Dry	
Virgin Scale	na		
Recycle Scale	na		
Asphalt	0.0		

Material	Recycle Agg	Recycle Agg	2.5 % Wet
%Wet/%mAC	2.0/14.00	2.0/13.75	+ dryTPH
dryTPH	0.0	0	
% Blend	0.00	0.0	

ADP Mix 0

0 TPH

132 °F

0.00 % mAC

8 Dust

0.0 TPH

0.00 % Blend

Current Total 1's

(Current) ADP Mix 0	280
ADP Mix 0	280.0

Fuel Flow

0.0 gpt

1.3 gpm

Message Area

Tank Num	70-02	84-02	Water
Sp. Gravity	1.832	1.824	0.00 TPH
Inventory	500	645	
Mix Unit	N/A	15176	
Temp			

48 °F

9.0 TPH

0.00 % mAC

7



Esc - Escape

F2 - Temp by Avg Value

F4 - Meter By Sample

F10 - Edit Calibration

**Asphalt Pump Skid**

Asphalt Temp

**48 °F**

Asphalt Pump

**9.0 TPH**

Asphalt Temp Zero	14400.0
Asphalt Temp Span	628.300

Asphalt Meter Span	300.000
A/C Pump TPH Max	90

Meter/PumpTach	+
Ratio Filter (sec)	0

Message Area



Material	Virgin Agg	Virgin Agg	Virgin Agg	Virgin Agg	Virgin Agg	Virgin Agg
% Wet	2.5	2.4	2.8	2.5	2.5	2.5
dryTPH	0	0	0	0	0	0
% Blend	0.0	0.0	0.0	0.0	0.0	0.0

Asphalt

Name:

Specific Gravity:

Info:

Comment:

- Esc - Escape
- F1 - Goto Another Asphalt
- F2 - Add Another Asphalt
- F4 - Remove This Asphalt
- F5 - Rename This Asphalt
- F6 - Edit This Asphalt

2.5 % Wet  
-1 dryTPH

	%Dry
Virgin Scale	na
Recycle Scale	na
Asphalt	0.0

Material	Recycle Agg	Recycle Agg	
%Wet/%AC	2.0/14.00	2.0/13.75	2.0 % Wet + dryTPH
dryTPH	0.0	0	
% Blend	0.00	0.0	

Current Total 1's

(Current) ADP Mix 0	280
ADP Mix 0	280.0

Fuel Flow

0.0 gpt  
**1.3** gpm

Message Area



Material	Virgin Agg	Virgin Agg	Virgin Agg	Virgin Agg	Virgin Agg	Virgin Agg	Virgin Agg	Virgin Agg
% Wet	2.1	2.4	2.8	2.5	2.5	2.8	2.4	2.8
dryTPH	0	0	0	0	0	0	0	0
% Bleed	0.0	0.0	0.0	0.0	0.0	0.0	0.0	0.0



2.5 % Wet  
-1 dryTPH

**ADP Mix 0**

0 TPH

131 °F

0.00 % mAC

%Dry	
Virgin Scale	na
Recycle Scale	na
Asphalt	0.0

Material	Recycle Agg	Recycle Agg
%Wet/ %mAC	2.0 / 4.00	2.0 / 3.75
dryTPH	0.0	0
% Bleed	0.00	0.0

2.0 % Wet  
+1 dryTPH



Message Area

Asphalt Tank Num	T0-02	R4-02
Sp. Gravity	1.032	1.024
Inventory	500	645
Mix Unit Empty	N/A	15178

48 °F  
9.0 TPH  
0.00 % mAC

Current Data	
Asphalt	48 °F
@ 1.024 Sp. Gravity	9.0 TPH
Raw Data	
Asphalt Meter Raw	171 pps
Temperature Raw	16254 pps

Blend Error Limit	+5.0 %
Blend Error Shutdown	0 sec
Divert Error Shutdown	0 sec
Divert Delay	0 sec

Asphalt Temp Zero	14400
Asphalt Temp Span	628.30
Asphalt Meter Span	300.00
Asphalt Pump TPH Max	90

Asphalt Skid Information

Esc - Escape

F2 - Calibrate Temp

F4 - Calibrate by Sample

F6 - Go To Delays

F7 - Go To System Options

F8 - Go To Material Properties

F10 - Edit

Material	Virgin Agg	Virgin Agg	Virgin Agg	Virgin Agg	Virgin Agg	Virgin Agg
% Wet	2.5	2.4	2.8	2.5	2.5	2.5
dryTPH	0	0	0	0	0	0
% Blend	0.0	0.0	0.0	0.0	0.0	0.0

Asphalt

Name:

Specific Gravity:

Info:

Comment:

**F10 - Confirm Removal**

**Esc - Cancel Removal**



ADP Mix 0

0 TPH

130 °F

0.00 % m/A/C

	%Dry		
Virgin Scale	na		
Recycle Scale	na		
Asphalt	0.0		



Material	Recycle Agg	Recycle Agg	
%Wet/ %m/A/C	2.0 / 4.00	2.0 / 3.75	2.0 % Wet + dryTPH
dryTPH	0.0	0	
% Blend	0.00	0.0	

Current Total 1's

(Current) ADP Mix 0	280
ADP Mix 0	280.0

Fuel Flow

0.0 gpt

1.3 gpm

Message Area



Material	Virgin Agg	Virgin Agg	Virgin Agg	Virgin Agg	Virgin Agg	Virgin Agg
% Wet	2.5	2.4	2.8	2.5	2.5	2.5
dryTPH	0	0	0	0	0	0
% Blend	0.0	0.0	0.0	0.0	0.0	0.0

Name:

Specific Gravity:

Info:

Comment:

**Change Asphalt Name**

New Asphalt Name:

Changing the Asphalt Name does NOT create new totals for this Asphalt. It is NOT recommended that you change the Asphalt name.

Are you sure you want to change the name of this Asphalt?

**F10 - Confirm**

**Esc - Cancel**

	%Dry
Virgin Scale	na
Recycle Scale	na
Asphalt	0.0

Material	Recycle Agg	Recycle Agg
%Wet/%SAC	2.0/14.00	2.0/13.75
dryTPH	0.0	0
% Blend	0.00	0.0

Asphalt Total 1's	
ADP Mix 0	280
	280.0

Fuel Flow

0.0 gpt

1.3 gpm

Message Area





## Asphalt Calibration by Sample

Asphalt Pump

9.0 TPH

Totalizer Locked	0.000 T
Test Time	0 sec

Asphalt Temp Zero	14400.0
Asphalt Temp Span	628.300
Asphalt Meter Span	300.000
A/C Pump TPH Max	90
Meter/PumpTach	+
Ratio Filter (sec)	0

Test Targets

1.024 Spec. Gr.
9.0 TPH
10.0 T

F10 - Confirm Changes

Esc - Cancel Changes



## Asphalt Calibration by Sample

Asphalt Pump

9.0 TPH

Totalizer Locked	0.000 T
Test Time	0 sec

Asphalt Temp Zero	14400.0
Asphalt Temp Span	628.300
Asphalt Meter Span	300.000
A/C Pump TPH Max	90
Meter/PumpTach	+
Ratio Filter (sec)	0

A/C Meter Error

If the actual total is  T  
 Then the current Asphalt error is  %

F10 - Confirm Changes

Esc - Cancel Changes



## Asphalt Calibration by Sample

Asphalt Pump

9.0 TPH

Totalizer Locked	0.000 T
Test Time	0 sec

Asphalt Temp Zero	14400.0
Asphalt Temp Span	628.300
Asphalt Meter Span	300.000
A/C Pump TPH Max	90

Meter/PumpTach	+
Ratio Filter (sec)	0

If the actual total is  T  
 Then the current Asphalt error is  %

A/C Meter Error

Truck Calculator

Tare	<input type="text" value="17440.00"/> lb
Gross	<input type="text" value="0.0000"/> lb
Net	<input type="text" value="0.0000"/> T

F10 - Use Truck Net

Esc - Cancel Edit

Message Area



## Asphalt Calibration by Sample

Asphalt Pump

**9.1** TPH

Totalizer Locked	0.000 T
Test Time	0 sec

Asphalt Temp Zero	14400.0
Asphalt Temp Span	628.300
Asphalt Meter Span	300.000
A/C Pump TPH Max	90

Meter/PumpTach	+
Ratio Filter (sec)	0

If the actual total is  T  
 Then the current Asphalt error is  %

Esc - Escape

F1 - Edit Actual

F3 - Edit Truck Info

F4 - Auto Recalibrate

F9 - Print Calibration

Truck Calculator

Tare	17440.0 lb
Gross	0.0000 lb
Net	0.0000 T

A/C Meter Error





## Asphalt Calibration by Sample

Asphalt Pump

**9.0 TPH**

Totalizer Locked 0.000 T

Test Time 0 sec

Asphalt Temp Zero	14400.0
Asphalt Temp Span	628.300
Asphalt Meter Span	300.000
A/C Pump TPH Max	90

Meter/PumpTach	+
Ratio Filter (sec)	0

### Test Targets

1.024 Spec. Gr.

9.0 TPH

10.0 T

F10 - Confirm

Esc - Cancel



## Asphalt Calibration by Sample

Asphalt Pump

9.0 TPH

Totalizer Locked	11.06 T
Test Time	2 sec

Asphalt Temp Zero	14400.0
Asphalt Temp Span	628.300
Asphalt Meter Span	300.000
A/C Pump TPH Max	90
Meter/PumpTach	+
Ratio Filter (sec)	0

### Test Targets

1.000 Spec. Gr.
9.0 TPH
10.0 T

Esc - Escape

F5 - Change Targets

F6 - Start Test

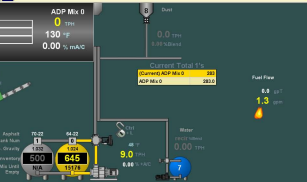
F8 - Evaluate & Calibrate

F10 - Edit Calibration

Material	Virgin Agg	Virgin Agg	Virgin Agg	Virgin Agg	Virgin Agg	Virgin Agg
% Wet	2.5	2.4	2.8	2.5	2.5	2.5
dryTPH	0	0	0	0	0	0
% Blend	0.0	0.0	0.0	0.0	0.0	0.0

AsphaltName	SpecificGravity	Info	Comment
[None]	1	Default Asphalt	Do not delete
64-32	1.834		
68-38	1.815		
78-32	1.832		

F10 - Confirm Selection  
Esc - Cancel Selection



Message Area





## Asphalt Temp Calibration by Average

Asphalt Temp

**48.0 °F**

Averaged for 0 sec

Average value +.1105 °F

Asphalt Temp Zero 14400.0

Asphalt Temp Span 628.300

Esc - Escape

F1 - Restart the Averaging Interval

F3 - Zero the Measured Average Value

F8 - Evaluate & Calibrate

F10 - Edit Calibration



F10 - Confirm Changes

Esc - Cancel Changes

## Asphalt Temp Calibration by Average

Asphalt Temp

48.0 °F

Averaged for 1 sec

Average value 47.974 °F

Asphalt Temp Zero 14400.0

Asphalt Temp Span 628.300



## Asphalt Temp Calibration by Average

Asphalt Temp

**48.0 °F**

Averaged for	1 sec
Average value	47.993 °F

Asphalt Temp Zero	14400.0
Asphalt Temp Span	628.300

Average Temp

If the actual averaged  
value is

47.993 °F

Then the average  
measured error is

0.0000 %

F10 - Confirm Changes

Esc - Cancel Changes



## Asphalt Temp Calibration by Average

Asphalt Temp

**48.0 °F**

Averaged for	1 sec
Average value	47.993 °F

Asphalt Temp Zero	14400.0
Asphalt Temp Span	628.300

If the actual averaged  
value is

47.993 °F

Then the average  
measured error is

0.0000 %

Average Temp

Esc - Escape

F1 - Edit Actual

F4 - Auto Recalibrate

F8 - Print Calibration



## Asphalt Temp Calibration by Average

Asphalt Temp	
<b>48.0 °F</b>	
Averaged for	4 sec
Average value	47.974 °F
Asphalt Temp Zero	14400.0
Asphalt Temp Span	628.300

Zero Calibration

Pressing F10 will adjust the meter's "Zero" so that the average value currently displayed will be zeroed.

Esc - Escape

F10 - Zero the Device

Message Area



Material	Virgin Agg	Virgin Agg	Virgin Agg	Virgin Agg	Virgin Agg	Virgin Agg	Virgin Agg	Virgin Agg
% Wet	2.5	2.4	2.8	2.5	2.5	2.8	2.4	2.8
dryTPH	0	0	0	0	0	0	0	0
% Blend	0.0	0.0	0.0	0.0	0.0	0.0	0.0	0.0



48 °F  
9.0 TPH  
0.00 % +A/C

%Dry	
Virgin Scale	na
Recycle Scale	na
Asphalt	0.0

Current Total 1's  
(Current) ADP Mix 0 280  
ADP Mix 0 280.0

Material	Recycle Agg	Recycle Agg
%Wet/%sAC	2.0/14.00	2.0/13.75
dryTPH	0.0	0
% Blend	0.00	0.0



Fuel Flow  
0.0 gpt  
1.3 gpm

Message Area

Tank Num	70-22	84-22	Water
Sp. Gravity	1.032	1.034	na
Inventory	500	645	0.00 TPH
Mix Unit	N/A	15176	0.00 TPH
Temp			

48 °F  
9.0 TPH  
0.00 % +A/C

**Calibrations**

- Esc - Escape
- F1 - Aggregate Scales
- F3 - Added Asphalt
- F4 - Mix Temperature
- F5 - Fuel Meter
- F8 - Feeders

Material	Virgin Agg	Virgin Agg	Virgin Agg	Virgin Agg	Virgin Agg	Virgin Agg	Virgin Agg	Virgin Agg
% Wet	2.1	2.4	2.8	2.5	2.5	2.8	2.4	2.8
dryTPH	0	0	0	0	0	0	0	0
% Blend	0.0	0.0	0.0	0.0	0.0	0.0	0.0	0.0

2.5 % Wet  
-1 dryTPH

ADP Mix 0	
Virgin Scale	na
Recycle Scale	na
Asphalt	0.0

0 TPH  
131 °F  
0.00 % m/A/C

Material	Recycle Agg	Recycle Agg
%Wet/ %mAC	2.0/14.00	2.0/13.75
dryTPH	0.0	0
% Blend	0.00	0.0

2.0 % Wet  
+1 dryTPH

Dust

0.0 TPH  
0.00 % Blend

Current Total 1's  
(Current) ADP Mix 0 280  
ADP Mix 0 280.0

Fuel Flow

0.0 gpt  
1.3 gpm

Message Area

Asphalt Tank Num	70-22	84-22
Sp. Gravity	1.032	1.034
Inventory	500	645
Mix Unit Empty	N/A	15178

48 °F  
9.0 TPH  
0.00 % mAC

Water 0.00 TPH

Material	Virgin Agg	Virgin Agg	Virgin Agg	Virgin Agg	Virgin Agg
% Wet	2.5	2.4	2.8	2.5	2.5
dryTPH	0	0	0	0	0
% Blend	0.0	0.0	0.0	0.0	0.0



Material Totals

Totals By:  
**All Mix Formulas**  
 Single Mix Formula

	Total 1	Total 2	Non-Reset
All Mixes	283.99	283.99	283.99
Virgin Scale	221.60	221.60	221.60
Recycle Scale	54.80	54.80	54.80
Dust Loss	5.49	5.49	5.49
Fuel Meter	0.00	0.00	0.00
64-22	13.86	13.86	13.86
Virgin Agg	210.91	210.91	210.91
Recycle Agg	52.71	52.71	52.71

Clear All Total 1?

F10 - Confirm Changes

Esc - Cancel Changes

2.5 % Wet  
 -1 dryTPH

**ADP Mix 0**

0 TPH

130 °F

0.00 % m/A/C

%Dry	
Virgin Scale	na
Recycle Scale	na
Asphalt	0.0

8 Dust  
 0.0 TPH  
 0.00 %Blend

Material	Recycle Agg	Recycle Agg
%Wet/%mAC	2.0/14.00	2.0/13.75
dryTPH	0.0	0
% Blend	0.00	0.0



2.0 % Wet  
 +1 dryTPH

Current Total 1's  
 (Current) ADP Mix 0 283  
 ADP Mix 0 283.0

Fuel Flow  
 0.0 gpt  
 1.3 gpm

Message Area

Asphalt  
 Tank Num 1  
 Sp. Gravity 1.032  
 Inventory 500  
 Mix Used N/A  
 Empty



70-22  
 Tank Num 0  
 Sp. Gravity 1.034  
 Inventory 645  
 Mix Used 15176  
 Empty



48 °F  
 9.1 TPH  
 0.00 % mAC

Water  
 FACT/blend  
 0.00 TPH



Material	Virgin Agg	Virgin Agg	Virgin Agg	Virgin Agg	Virgin Agg
% Wet	2.5	2.4	2.8	2.5	2.5
dryTPH	0	0	0	0	0
% Blend	0.0	0.0	0.0	0.0	0.0



Material Totals

Totals By:  
**All Mix Formulas**  
 Single Mix Formula

	Total 1	Total 2	Non-Reset
All Mixes	283.99	283.99	283.99
Virgin Scale	221.60	221.60	221.60
Recycle Scale	54.80	54.80	54.80
Dust Loss	5.49	5.49	5.49
Fuel Meter	0.00	0.00	0.00
64-22	13.86	13.86	13.86
Virgin Agg	210.91	210.91	210.91
Recycle Agg	52.71	52.71	52.71

Clear All Total ??

F10 - Confirm Changes

Esc - Cancel Changes

2.5 % Wet  
 -1 dryTPH

**ADP Mix 0**

0 TPH

130 °F

0.00 % m/A/C

%Dry	
Virgin Scale	na
Recycle Scale	na
Asphalt	0.0

8 Dust  
 0.0 TPH  
 0.00 % Blend

Material	Recycle Agg	Recycle Agg
%Wet/ %m/C	2.0/14.00	2.0/13.75
dryTPH	0.0	0
% Blend	0.00	0.0



2.0 % Wet  
 +1 dryTPH

Current Total 1's  
 (Current) ADP Mix 0 283  
 ADP Mix 0 283.0

Fuel Flow  
 0.0 gpt  
 1.3 gpm

Message Area

Asphalt Tank Num  
 Sp. Gravity  
 Inventory  
 Mix Unit  
 Empty

70-22  
 1  
 1.032  
 500  
 NA

64-22  
 0  
 1.034  
 645  
 15176

Oil L  
 40 °F  
 9.0 TPH  
 0.00 % m/C

Water  
 (Recycled)  
 0.00 TPH



- Data Screens**
- Esc - Escape
  - F1 - Virgin Scale
  - F2 - Recycle Scale
  - F3 - Added Asphalt
  - F8 - Feeders
  - F10 - Version

Material	Virgin Agg	Virgin Agg	Virgin Agg	Virgin Agg	Virgin Agg	Virgin Agg	Virgin Agg	Virgin Agg
% Wet	2.5	2.4	2.8	2.5	2.5	2.8	2.4	2.8
dryTPH	0	0	0	0	0	0	0	0
% Blend	0.0	0.0	0.0	0.0	0.0	0.0	0.0	0.0



2.5 % Wet  
-1 dryTPH

**ADP Mix 0**

0 TPH

131 °F

0.00 % m/A/C

%Dry	
Virgin Scale	na
Recycle Scale	na
Asphalt	0.0

Material	Recycle Agg	Recycle Agg	
%Wet/ %mAC	2.0/4.00	2.0/3.75	2.5 % Wet + dryTPH
dryTPH	0.0	0	
% Blend	0.00	0.0	



**Current Total 1's**

(Current) ADP Mix 0	280
ADP Mix 0	280.0

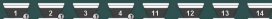
**Fuel Flow**

0.0 gpt  
1.3 gpm

Message Area



Material	Virgin Agg	Virgin Agg	Virgin Agg	Virgin Agg	Virgin Agg	Virgin Agg	Virgin Agg	Virgin Agg
% Wet	2.5	2.4	2.8	2.5	2.5	2.4	2.8	2.8
dryTPH	0	0	0	0	0	0	0	0
% Blend	0.0	0.0	0.0	0.0	0.0	0.0	0.0	0.0



**ADP Mix 0**

0 TPH

131 °F

0.00 % m/A/C

%Dry	
Virgin Scale	na
Recycle Scale	na
Asphalt	0.0

Material	Recycle Agg	Recycle Agg
%Wet/ %m/C	2.0/14.00	2.0/13.75
dryTPH	0.0	0
% Blend	0.00	0.0



Current Total 1's

(Current) ADP Mix 0 280

ADP Mix 0 280.0

Fuel Flow

0.0 gpt

1.3 gpm



**Date & Time Adjustment**

February, 2011

Sun	Mon	Tue	Wed	Thu	Fri	Sat
29	31	1	2	3	4	5
6	7	8	9	10	11	12
13	14	15	16	17	18	19
20	21	22	23	24	25	26
27	28	1	2	3	4	5
6	7	8	9	10	11	12

Today: 2/17/2011

02/17/2011 13:54:39

Esc - Escape

F10 - Confirm

Message Area

# ADP-100 Graphical User Interface

1:54:59 PM

by Systems Equipment Corp.

(English)

Material	Virgin Agg	Virgin Agg	Virgin Agg	Virgin Agg	Virgin Agg	Virgin Agg	Virgin Agg	Virgin Agg	Virgin Agg
% Wet	2.5	2.4	2.8	2.5	2.5	2.8	2.4	2.8	
dryTPH	0	0	0	0	0	0	0	0	
% Blend	0.0	0.0	0.0	0.0	0.0	0.0	0.0	0.0	



2.5 % Wet  
-1 dryTPH

%Dry	
Virgin Scale	na
Recycle Scale	na
Asphalt	0.0

**ADP Mix 0**

0 TPH

131 °F

0.00 % m/A/C

Material	Recycle Agg	Recycle Agg
%Wet/ %m/A/C	2.0/14.00	2.0/13.75
dryTPH	0.0	0
% Blend	0.00	0.0

2.0 % Wet  
+ dryTPH

**Time To POI**

Virgin Scale	18
Recycle Scale	2
Virgin 1	12
Virgin 2	14
Virgin 3	16
Virgin 4	18
Recycle 5	4
Recycle 6	6
Water 7	1
Dust 8	1
Virgin 11	20
Virgin 12	22
Virgin 13	24
Virgin 14	26
Divert Delay	0

The Material travel time is measured in seconds from the equipment to the Point Of A/C Injection

**F10 - Confirm Changes**

**Esc - Cancel Changes**

**Current Total T'S**

(Current) ADP Mix 0	280
ADP Mix 0	280.0

**Fuel Flow**

0.0 gpt  
**1.3 gpm**

Message Area

Asphalt Tank Num	70-22	94-22	
Sp. Gravity	1.032	1.034	
Inventory	500	645	
Mix Unit Empty	N/A	15176	

48 °F  
**9.0 TPH**  
0.00 % m/A/C

Water 0.00 TPH

Material	Virgin Agg	Virgin Agg	Virgin Agg	Virgin Agg	Virgin Agg	Virgin Agg	Virgin Agg	Virgin Agg	Virgin Agg
% Wet	2.5	2.4	2.8	2.5	2.5	2.8	2.4	2.8	
dryTPH	0	0	0	0	0	0	0	0	
% Blend	0.0	0.0	0.0	0.0	0.0	0.0	0.0	0.0	



2.5 % Wet  
-1 dryTPH

**ADP Mix 0**

0 TPH

131 °F

0.00 % m/A/C

%Dry	
Virgin Scale	na
Recycle Scale	na
Asphalt	0.0

Material	Recycle Agg	Recycle Agg	
%Wet/ %m/C	2.0/14.00	2.0/13.75	2.5 % Wet + dryTPH
dryTPH	0.0	0	
% Blend	0.00	0.0	



Time To POI	
Virgin Scale	10
Recycle Scale	3
Virgin 1	13
Virgin 2	14
Virgin 3	16
Virgin 4	18
Recycle 5	4
Recycle 6	6
Water 7	1
Dust 8	1
Virgin 11	20
Virgin 12	22
Virgin 13	24
Virgin 14	26
Direct Delay	0

The Material travel time is measured in seconds from the equipment to the Point Of A/C Injection

**Esc - Escape**

**F10 - Edit**

Current Total T'S

(Current) ADP Mix 0	280
ADP Mix 0	280.0

Fuel Flow

0.0 gpt

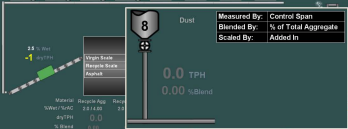
1.3 gpm

Message Area





Material	Virgin Agg	Virgin Agg	Virgin Agg	Virgin Agg	Virgin Agg	Virgin Agg	Virgin Agg	Virgin Agg
% Wet	2.5	2.4	2.8	2.5	2.5	2.8	2.4	2.8
dryTPH	0	0	0	0	0	0	0	0
% Blend	0.0	0.0	0.0	0.0	0.0	0.0	0.0	0.0



Dust

0.0 TPH  
0.00 %Blend

Current Total 1's

ADP Mix 0	280
0	280.0

Fuel Flow

0.0 gpt  
1.3 gpm

Message Area



Material	Virgin Agg	Virgin Agg	Virgin Agg	Virgin Agg	Virgin Agg
% Wet	2.5	2.4	2.8	2.5	2.5
dryTPH	0	0	0	0	0
% Blend	0.0	0.0	0.0	0.0	0.0



Material	Recycle Agg	Recycle Agg
%Wet/%AC	2.0/14.00	2.0/13.75
dryTPH	0.0	0
% Blend	0.00	0.0



Equipment Totals

**Totals By:**

- All Mix Formulas
- Single Mix Formula

	Total 1	Total 2	Non-Reset
All Mixes	283.99	283.99	283.99
Virgin Scale	221.60	221.60	221.60
Recycle Scale	54.80	54.80	54.80
Dust Loss	5.49	5.49	5.49
Fuel Meter	0.00	0.00	0.00
64-22	13.06	13.06	13.06
Virgin 1	52.73	52.73	52.73
Virgin 2	52.73	52.73	52.73
Virgin 3	52.73	52.73	52.73
Virgin 4	52.73	52.73	52.73
Recycle 5	52.71	52.71	52.71

- Esc - Escape
- F6 - Go To Reports Screen
- F7 - Clear All Total 1's
- F8 - Clear All Total 2's

Message Area

**Current Total 1's**

(Current) ADP Mix 0 283  
ADP Mix 0 283.0

Fuel Flow

0.0 gph  
**1.3** gph

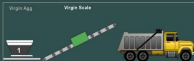
Asphalt  
Tank Num  
Sp. Gravity  
Inventory  
Mix Unit  
Empty



Oil  
48 T  
**9.0** TPH  
0.00 % FAC



## Virgin 1



### Automatic Calibration

Virgin Scale

**-0.6 wTPH**

Totalizer Locked	-0.002 wT
Test Time	3 sec

By Control Span	+0.0704 wT
By Speed Sensor	+0.0696 wT

Control Span Cal	<b>110.0</b>		
Calibrate High	110.0	@	1800
Calibrate Mid	off	@	off
Calibrate Low	off	@	off

### Test Targets

Material: Virgin Agg

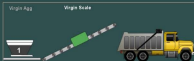
At	2.1	% wet
High	0	dTPH
Mid	0	dTPH
Low	0	dTPH
to	0.0	wT

F10 - Confirm Changes

Esc - Cancel Changes

Message Area

## Virgin 1



### Automatic Calibration

Virgin Scale

**-0.6 wTPH**

Totalizer Locked    -.002 wT

Test Time            3 sec

By Control Span    +.0704 wT

By Speed Sensor    +.0696 wT

Control Span Cal    110.0

Calibrate High      110.0 @ 1800

Calibrate Mid        off @ off

Calibrate Low        off @ off

### Test Targets

Material: Virgin Agg

At            2.1 % wet

High        0 dTPH

Mid           0 dTPH

Low          0 dTPH

to            0.0 wT

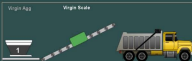
F10 - Confirm

Esc - Escape

Message Area

←  
Previous

Virgin 1

 Next  
→
**Automatic Calibration**

Virgin Scale

**-0.6 wTPH**

Totalizer Locked	-0.002 wT
Test Time	3 sec

By Control Span	+0.0704 wT
By Speed Sensor	+0.0696 wT

Control Span Cal	110.0		
Calibrate High	110.0	@	1800
Calibrate Mid	off	@	off
Calibrate Low	off	@	off

**Test Targets**

Material: Virgin Agg

At	2.1 % wet
High	0 dTPH
Mid	0 dTPH
Low	0 dTPH
to	0.0 wT

Esc - Escape

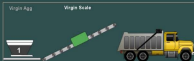
F3 - Zero Scale

F5 - Set Targets

F6 - Start Test

F10 - Edit

Message Area

**Virgin 1****Automatic Evaluation**

Virgin Scale

**-0.6** wTPH

Totalizer Locked    -.002 wT

Test Time            3 sec

Rate wTPH	ByControl	%Error	Measured	%Error

Control Span Cal	110.0		
Calibrate High	110.0	@	1800
Calibrate Mid	off	@	off
Calibrate Low	off	@	off

**Test Targets**

Material: Virgin Agg

At	2.1	% wet
High	0	dTPH
Mid	0	dTPH
Low	0	dTPH
to	0.0	wT

P10 - Confirm

Esc - Escape

Message Area

**Automatic Evaluation**

Virgin Scale

**-0.6** wTPH

Totalizer Locked	-0.002 wT
Test Time	3 sec

Rate wTPH	ByControl %Error	Measured %Error

Control Span Cal	110.0		
Calibrate High	110.0 @	1800	
Calibrate Mid	off @	off	
Calibrate Low	off @	off	

**Test Targets**

Material: Virgin Agg

At	2.1 % wet
High	0 dTPH
Mid	0 dTPH
Low	0 dTPH
to	0.0 wT

Esc - Escape

F3 - Zero Scale

F5 - Set Targets

F6 - Start Test

F10 - Edit

Message Area

F10 - Confirm Changes

Esc - Cancel Changes

**Feeder Calibrations**

Feeder	Material	Cal Date	Control Span	Cal High	High @ Raw	Cal Mid	Mid @ Raw	Cal Low	Low @ Raw
Virgin 1	Virgin Agg	02/17/2011	110.0	110.0	1800	off	off	off	off
Virgin 2	Virgin Agg	02/17/2011	110.0	110.0	1800	off	off	off	off
Virgin 3	Virgin Agg	02/17/2011	110.0	110.0	1800	off	off	off	off
Virgin 4	Virgin Agg	02/17/2011	110.0	110.0	1800	off	off	off	off
Recycle 5	Recycle Agg	02/17/2011	110.0	110.0	1800	off	off	off	off
Recycle 6	Recycle Agg	02/17/2011	110.0	110.0	1800	off	off	off	off
Water 7	Water	02/17/2011	110.0	110.0					
Dust 8	Dust	02/17/2011	110.0	110.0					
Virgin 11	Virgin Agg	02/17/2011	110.0	110.0	1800	off	off	off	off
Virgin 12	Virgin Agg	02/17/2011	110.0	110.0	1800	off	off	off	off
Virgin 13	Virgin Agg	02/17/2011	110.0	110.0	1800	off	off	off	off
Virgin 14	Virgin Agg	02/17/2011	110.0	110.0	1800	off	off	off	off

Message Area



F10 - Confirm Changes

Esc - Cancel Changes

**Feeder Calibrations**

Feeder	Material	Cal Date	Control Span	Cal High	High @ Raw	Cal Mid	Mid @ Raw	Cal Low	Low @ Raw
Virgin 1	Virgin Agg	02/17/2011	110.0	110.0	1800	off	off	off	off
Virgin 2	Virgin Agg	02/17/2011	110.0	110.0	1800	off	off	off	off
Virgin 3	Virgin Agg	02/17/2011	110.0	110.0	1800	off	off	off	off
Virgin 4	Virgin Agg	02/17/2011	110.0	110.0	1800	off	off	off	off
Recycle 5	Recycle Agg	02/17/2011	110.0	110.0	1800	off	off	off	off
Recycle 6	Recycle Agg	02/17/2011	110.0	110.0	1800	off	off	off	off
Water 7	Water	02/17/2011	110.0	110.0					
Dust 8	Dust	02/17/2011	110.0	110.0					
Virgin 11	Virgin Agg	02/17/2011	110.0	110.0	1800	off	off	off	off
Virgin 12	Virgin Agg	02/17/2011	110.0	110.0	1800	off	off	off	off
Virgin 13	Virgin Agg	02/17/2011	110.0	110.0	1800	off	off	off	off
Virgin 14	Virgin Agg	02/17/2011	110.0	110.0	1800	off	off	off	off

Message Area

Esc - Escape

F1 - Manual Calibration

F3 - Change Material

F4 - Auto Calibrate

F8 - Auto Evaluate

F10 - Edit Calibration

**Feeder Calibrations**

Feeder	Material	Cal Date	Control Span	Cal High	High @ Raw	Cal Mid	Mid @ Raw	Cal Low	Low @ Raw
Virgin 1	Virgin Agg	02/17/2011	110.0	110.0	1800	off	off	off	off
Virgin 2	Virgin Agg	02/17/2011	110.0	110.0	1800	off	off	off	off
Virgin 3	Virgin Agg	02/17/2011	110.0	110.0	1800	off	off	off	off
Virgin 4	Virgin Agg	02/17/2011	110.0	110.0	1800	off	off	off	off
Recycle 5	Recycle Agg	02/17/2011	110.0	110.0	1800	off	off	off	off
Recycle 6	Recycle Agg	02/17/2011	110.0	110.0	1800	off	off	off	off
Water 7	Water	02/17/2011	110.0	110.0					
Dust 8	Dust	02/17/2011	110.0	110.0					
Virgin 11	Virgin Agg	02/17/2011	110.0	110.0	1800	off	off	off	off
Virgin 12	Virgin Agg	02/17/2011	110.0	110.0	1800	off	off	off	off
Virgin 13	Virgin Agg	02/17/2011	110.0	110.0	1800	off	off	off	off
Virgin 14	Virgin Agg	02/17/2011	110.0	110.0	1800	off	off	off	off

Message Area

Material	Virgin Agg	Virgin Agg	Virgin Agg	Virgin Agg	Virgin Agg	Virgin Agg	Virgin Agg	Virgin Agg
% Wet	2.5	2.4	2.8	2.5	2.5	2.8	2.4	2.8
dryTPH	0	0	0	0	0	0	0	0
% Blend	0.0	0.0	0.0	0.0	0.0	0.0	0.0	0.0



Mix: ADP Mix 0

Production Targets	
Aggregate Rates	0 TPH
Production Total	0 T
A/C Recirc. Rate	9.0 TPH

## Do NOT continue if making mix!

Esc - Back to Previous Screen

F10 - Continue

%Dry	
Virgin Scale	na
Recycle Scale	na
Asphalt	0.0

Material	Recycle Agg	Recycle Agg	2.8 % Wet
%Wet/%AAC	2.0/14.00	2.0/13.75	dryTPH
dryTPH	0.0	0	+ dryTPH
% Blend	0.00	0.0	



Current Total 1's

(Current) ADP Mix 0	280
ADP Mix 0	280.0

Fuel Flow

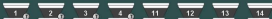
0.0 gph

1.3 gpm

Message Area



Material	Virgin Agg	Virgin Agg	Virgin Agg	Virgin Agg	Virgin Agg	Virgin Agg	Virgin Agg	Virgin Agg
% Wet	2.5	2.4	2.8	2.5	2.5	2.8	2.4	2.8
dryTPH	0	0	0	0	0	0	0	0
% Blend	0.0	0.0	0.0	0.0	0.0	0.0	0.0	0.0



### Feeder Cleanout

Virgin 1	(controlled by Mix Formula)
Virgin 2	(controlled by Mix Formula)
Virgin 3	(controlled by Mix Formula)
Virgin 4	(controlled by Mix Formula)
Recycle 5	(controlled by Mix Formula)
Recycle 6	(controlled by Mix Formula)
Water 7	(controlled by Mix Formula)
Dust 8	(controlled by Mix Formula)
Virgin 11	(controlled by Mix Formula)
Virgin 12	(controlled by Mix Formula)
Virgin 13	(controlled by Mix Formula)
Virgin 14	(controlled by Mix Formula)

Run feeders at this percentage (1-8%) 23 Set

Esc - Escape  
F10 - All Off

### ADP Mix 0

0 TPH  
130 °F  
0.00 % m/A/C

	%Dry		
Virgin Scale	na		
Recycle Scale	na		
Asphalt	0.0		

2.5 % Wet  
-1 dryTPH

Material	Recycle Agg	Recycle Agg	
%Wet/ %mAC	2.0/14.00	2.0/13.75	2.5 % Wet + dryTPH
dryTPH	0.0	0	
% Blend	0.00	0.0	



Current Total 1's  
(Current) ADP Mix 0 280  
ADP Mix 0 280.0

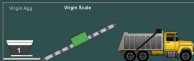
Fuel Flow  
0.0 gpt  
1.3 gpm

Message Area

Tank Num	TS-02	94-02	Water
1	0	0	0.00 TPH
Sp. Gravity	1.032	1.034	
Inventory	500	645	
Mix Used	N/A	1517%	
Temp			

Oil L 48 °F 9.0 TPH 0.00 % mAC

## Virgin 1



### Manual Calibration

Virgin Scale

**-0.6 wTPH**

Totalizer Locked	-0.02 wT
Test Time	3 sec

By Control Span	+0.0704 wT
By Speed Sensor	+0.0696 wT

Control Span Cal	<b>110.0</b>		
Calibrate High	110.0	@	1800
Calibrate Mid	off	@	off
Calibrate Low	off	@	off

### Test Targets

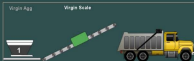
Material: Virgin Agg

At	2.1 % wet
and	0.000 dTPH
to	71 sec

F10 - Confirm Changes

Esc - Cancel Changes

## Virgin 1



### Manual Calibration

Virgin Scale

**-0.6 wTPH**

Totalizer Locked	-0.002 wT
Test Time	3 sec

By Control Span	+0.0704 wT
By Speed Sensor	+0.0696 wT

Control Span Cal	110.0		
Calibrate High	110.0	@	1800
Calibrate Mid	off	@	off
Calibrate Low	off	@	off

Message Area

Mo

If the actual total is **-0.002** wT

Then the current Feeder error is

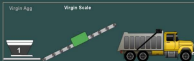
Ctrl Span: **-3500** %

Spd Error: **-3465** %

F10 - Confirm Changes

Esc - Cancel Changes

## Virgin 1



### Manual Calibration

Virgin Scale

**-0.6 wTPH**

Totalizer Locked	-0.002 wT
Test Time	3 sec

By Control Span	+0.0704 wT
By Speed Sensor	+0.0696 wT

Control Span Cal	110.0		
Calibrate High	110.0	@	1800
Calibrate Mid	off	@	off
Calibrate Low	off	@	off

Mo

 If the actual total is  wT

 Then the current  
Feeder error is

 Cell Span:  %

 Spd Span:  %

Feeder Errors

#### Truck Calculator

Tare	<input type="text" value="17440.00"/>	lb
Gross	<input type="text" value="0.0000"/>	lb
Net	<input type="text" value="0.0000"/>	T

F10 - Use Truck Net

Esc - Cancel Edit

Message Area

**Virgin 1****Manual Calibration**

Virgin Scale

**-0.6 wTPH**

Totalizer Locked	-0.002 wT
Test Time	3 sec

By Control Span	+0.0704 wT
By Speed Sensor	+0.0696 wT

Control Span Cal	110.0		
Calibrate High	110.0	@	1800
Calibrate Mid	off	@	off
Calibrate Low	off	@	off

Mo

 If the actual total is  wT

 Then the current  
Feeder error is

 Ctrl Span:  %

 Spd Span:  %
**Esc - Escape****F1 - Edit Actual****F3 - Edit Truck Info****F4 - Auto Recalibrate****F9 - Print Calibration****Truck Calculator**

Tare	17440.0 lb
Gross	0.0000 lb
Net	0.0000 T

Message Area

Feeder Errors



## Virgin 1



### Manual Calibration

Virgin Scale

**-0.6 wTPH**

Totalizing	-0.002 wT
Test Time	3 sec

By Control Span	+0.0704 wT
By Speed Sensor	+0.0696 wT

Control Span Cal	110.0		
Calibrate High	110.0	@	1800
Calibrate Mid	off	@	off
Calibrate Low	off	@	off

### Test Targets

Material: Virgin Agg

At	2.1	% wet
and	0.000	dTPH
to	71	sec

P10 - Confirm

Esc - Escape

Message Area

←  
Previous

Virgin 1

 Next  
→
**Manual Calibration**

Virgin Scale

**-0.6 wTPH**

Totalizing	0.000 wT
Test Time	3 sec

By Control Span	+0.0704 wT
By Speed Sensor	+0.0696 wT

Control Span Cal	110.0		
Calibrate High	110.0	@	1800
Calibrate Mid	off	@	off
Calibrate Low	off	@	off

## Test Targets

Material: Virgin Agg

At	2.1 % wet
and	0.000 dTPH
to	71 sec

Esc - Escape

F3 - Zero Scale

F5 - Set Targets

F6 - Start Test

F8 - Evaluate and Calibrate

F10 - Edit

Message Area

Material	Virgin Agg	Virgin Agg	Virgin Agg	Virgin Agg	Virgin Agg	Virgin Agg	Virgin Agg	Virgin Agg
% Wet	2.5	2.4	2.8	2.5	2.5	2.8	2.4	2.8
dryTPH	0	0	0	0	0	0	0	0
% Blend	0.0	0.0	0.0	0.0	0.0	0.0	0.0	0.0



Feeder Options	
Virgin 1 measured by	Speed Sensor
Virgin 2 measured by	Speed Sensor
Virgin 3 measured by	Speed Sensor
Virgin 4 measured by	Speed Sensor
Recycle 5 measured by	Speed Sensor
Recycle 6 measured by	Control Span
Water 7 measured by	Control Span
Dust 8 measured by	Control Span
Virgin 11 measured by	Control Span
Virgin 13 measured by	Control Span
Virgin 13 measured by	Control Span
Virgin 14 measured by	Control Span

F10 - Confirm Changes

Esc - Cancel Changes

2.5 % Wet  
-1 dryTPH

**ADP Mix 0**

0 TPH

131 °F

0.00 % mAC

%Dry	
Virgin Scale	na
Recycle Scale	na
Asphalt	0.0

Material	Recycle Agg	Recycle Agg
%Wet/ %mAC	2.0/14.00	2.0/13.75
dryTPH	0.0	0
% Blend	0.00	0.0



2.0 % Wet  
+1 dryTPH

Current Total 1's

(Current) ADP Mix 0	280
ADP Mix 0	280.0

Fuel Flow

0.0 gpt

1.3 gpm

Message Area

Asphalt Tank Num	TG-02	94-02	Water
Sp. Gravity	1.032	1.034	0.00 TPH
Inventory	500	645	
Mix Unit Empty	N/A	15176	

48 °F  
9.0 TPH  
0.00 % mAC

Material	Virgin Agg	Virgin Agg	Virgin Agg	Virgin Agg	Virgin Agg	Virgin Agg	Virgin Agg	Virgin Agg
% Wet	2.5	2.4	2.8	2.5	2.5	2.8	2.4	2.8
dryTPH	0	0	0	0	0	0	0	0
% Blend	0.0	0.0	0.0	0.0	0.0	0.0	0.0	0.0



Feeder Options

Virgin 1 measured by	Speed Sensor
Virgin 2 measured by	Speed Sensor
Virgin 3 measured by	Speed Sensor
Virgin 4 measured by	Speed Sensor
Recycle 5 measured by	Speed Sensor
Recycle 6 measured by	Control Span
Water 7 measured by	Control Span
Dust 8 measured by	Control Span
Virgin 11 measured by	Control Span
Virgin 13 measured by	Control Span
Virgin 13 measured by	Control Span
Virgin 14 measured by	Control Span

Esc - Escape  
F10 - Edit

2.5 % Wet  
-1 dryTPH

**ADP Mix 0**

0 TPH

131 °F

0.00 % mA/C

%Dry	
Virgin Scale	na
Recycle Scale	na
Asphalt	0.0

Material	Recycle Agg	Recycle Agg
%Wet/ %mAC	2.0 / 4.00	2.0 / 3.75
dryTPH	0.0	0
% Blend	0.00	0.0

2.0 % Wet  
+ dryTPH



Current Total 1's  
(Current) ADP Mix 0 280  
ADP Mix 0 280.0

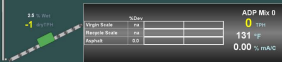
Fuel Flow  
0.0 gpt  
1.3 gpm

Message Area

Asphalt Tank Num	TG-02	04-02	Water
Sp. Gravity	1.032	1.034	0.00 TPH
Inventory	500	645	
Mix Unit Empty	NA	15176	

48 °F  
9.1 TPH  
0.00 % mAC

Material	Virgin Agg	Virgin Agg	Virgin Agg	Virgin Agg	Virgin Agg	Virgin Agg	Virgin Agg	Virgin Agg
% Wet	2.5	2.4	2.8	2.5	2.5	2.8	2.4	2.8
dryTPH	0	0	0	0	0	0	0	0
% Blend	0.0	0.0	0.0	0.0	0.0	0.0	0.0	0.0



Material	Recycle Agg	Recycle Agg	
%Wet/%m/C	2.0/14.00	2.0/13.75	2.8 % Wet
dryTPH	0.0	0	+ dryTPH
% Blend	0.00	0.0	



Message Area

Asphalt	70-32	94-32
Tank Num	1	0
Sp. Gravity	1.032	1.034
Inventory	500	645
Mix Unit	N/A	1517%
Empty		

← Previous

Virgin 1

Next →

## Current Data

Target Rate	0.000	TPH
Measured Rate	0.000	TPH
Measured By	Speed Sensor	

## Raw Data

Tach Output Raw	0	pps
Tach Correction	1.00	

Error Limit	25.0	%
Error Shutdown	0	sec
Delay to PDI	12	sec

Control Span Cal	110.0	
Cal High	110.0 @	1800
Cal Mid	off @	off
Cal Low	off @	off

## Esc - Escape

- F3 - Go To Delays
- F4 - Go To Material Properties
- F7 - Feeder Options
- F8 - Feeder Calibrations
- F10 - Edit

Feeder Data Information

**Esc - Escape**

F1 - Restart the Averaging Interval

F3 - Zero the Measured Average Value

F8 - Evaluate &amp; Calibrate

F10 - Edit Calibration

## Fuel Meter Calibration

**Fuel Meter****1.3 gpm**

Averaged for	2 sec
Average value	1.3430 gpm

Fuel Meter Zero	14403
Fuel Meter Span	2.998

Threshold	0.000 gpm
Damping Filter	10 sec
Total Used	0 G

Message Area

F10 - Confirm Changes

Esc - Cancel Changes

## Fuel Meter Calibration

Fuel Meter

**1.3 gpm**

Averaged for	1 sec
Average value	1.3431 gpm

Fuel Meter Zero	14403
Fuel Meter Span	2.998

Threshold	0.000 gpm
Damping Filter	10 sec
Total Used	0 G

Message Area

**Fuel Meter Calibration****Fuel Meter****1.3 gpm**

<b>Averaged for</b>	<b>0 sec</b>
<b>Average value</b>	<b>1.3430 gpm</b>

<b>Fuel Meter Zero</b>	<b>14403</b>
<b>Fuel Meter Span</b>	<b>2.998</b>

<b>Threshold</b>	<b>0.000 gpm</b>
<b>Damping Filter</b>	<b>10 sec</b>
<b>Total Used</b>	<b>0 G</b>

Average Volume Rate

If the actual averaged value is

**1.3430** gpm

Then the average measured error is

**0.0000** %

F10 - Confirm Changes

Esc - Cancel Changes



**Fuel Meter Calibration****Fuel Meter****1.3 gpm**

<b>Averaged for</b>	<b>0 sec</b>
<b>Average value</b>	<b>1.3430 gpm</b>

<b>Fuel Meter Zero</b>	<b>14403</b>
<b>Fuel Meter Span</b>	<b>2.998</b>

<b>Threshold</b>	<b>0.000 gpm</b>
<b>Damping Filter</b>	<b>10 sec</b>
<b>Total Used</b>	<b>0 G</b>

If the actual averaged value is

1.3430 gpm

Then the average measured error is

0.0000 %

Average Volume Rate

Esc - Escape

F1 - Edit Actual

F4 - Auto Recalibrate

F8 - Print Calibration

**Fuel Meter Calibration****Fuel Meter****1.3 gpm**

Averaged for	3 sec
Average value	1.3430 gpm

Fuel Meter Zero	14403
Fuel Meter Span	2.998

Threshold	0.000 gpm
Damping Filter	10 sec
Total Used	0 G

Zero Calibration

Pressing F10 will adjust the meter's "Zero" so that the average value currently displayed will be zeroed.

Esc - Escape

F10 - Zero the Device

Material	Virgin Agg	Virgin Agg	Virgin Agg	Virgin Agg	Virgin Agg	Virgin Agg	Virgin Agg	Virgin Agg
% Wet	2.5	2.4	2.8	2.5	2.5	2.8	2.4	2.8
dryTPH	0	0	0	0	0	0	0	0
% Blend	0.0	0.0	0.0	0.0	0.0	0.0	0.0	0.0



2.5 % Wet  
-1 dryTPH

**ADP Mix 0**

0 TPH

131 °F

0.00 % m/A/C

%Dry	
Virgin Scale	na
Recycle Scale	na
Asphalt	0.0

Material	Recycle Agg	Recycle Agg
%Wet/ %mAC	2.0/14.00	2.0/13.75
dryTPH	0.0	0
% Blend	0.00	0.0

2.0 % Wet  
+1 dryTPH



**Automatic Log Options**

Records printed every	1 minutes
Measurement Devices are	Printed
Individual Moistures are	Printed
Individual Rates are	Printed
Individual Totals are	Printed
Individual Blends are	Printed
Error Occurances are	Printed
Fuel Flow Reports are	Not Printed
Individual Targets are	Not Printed
Feeder Materials are	Not Printed

- Log to Database
- Log to File
- Log to Printer

**F10 - Confirm Changes**

**Esc - Cancel Changes**

Current Total 1's

(Current) ADP Mix 0	280
ADP Mix 0	280.0

Fuel Flow

0.0 gph  
**1.3** gph

Message Area

Asphalt  
Tank Num  
Sp. Gravity  
Inventory  
Mix Used  
Empty

70-22  
**1**  
1.032  
500  
NA

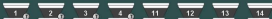
94-22  
**0**  
1.034  
645  
15176

Oil  
48 °F  
**9.0** TPH  
0.00 % mAC

Water  
pH: 7.0  
0.00 TPH



Material	Virgin Agg	Virgin Agg	Virgin Agg	Virgin Agg	Virgin Agg	Virgin Agg	Virgin Agg	Virgin Agg
% Wet	2.5	2.4	2.8	2.5	2.5	2.8	2.4	2.8
dryTPH	0	0	0	0	0	0	0	0
% Blend	0.0	0.0	0.0	0.0	0.0	0.0	0.0	0.0



2.5 % Wet  
-1 dryTPH

**ADP Mix 0**

0 TPH

131 °F

0.00 % m/A/C

%Dry	
Virgin Scale	na
Recycle Scale	na
Asphalt	0.0

Material	Recycle Agg	Recycle Agg
%Wet/ %mAC	2.0 / 4.00	2.0 / 3.75
dryTPH	0.0	0
% Blend	0.00	0.0

2.0 % Wet  
+ dryTPH



**Automatic Log Options**

Records printed every	1 minutes
Measurement Devices are	Printed
Individual Moistures are	Printed
Individual Rates are	Printed
Individual Totals are	Printed
Individual Blends are	Printed
Error Occurances are	Printed
Fuel Flow Reports are	Not Printed
Individual Targets are	Not Printed
Feeder Materials are	Not Printed

- Log to Database
- Log to File
- Log to Printer

**Esc - Escape**

**F10 - Edit**

Current Total 1's

(Current) ADP Mix 0	280
ADP Mix 0	280.0

Fuel Flow

0.0 gph  
**1.3** gph

Message Area

Asphalt  
Tank Num  
Sp. Gravity  
Inventory  
Mix Used  
Empty

70-22  
**1**  
1.032  
500  
NA

94-22  
**0**  
1.034  
645  
15178

Oil  
L  
48 °F  
**9.0** TPH  
0.00 % mAC

Water  
FACT/blend  
0.00 TPH

**7**

Material	Virgin Agg	Virgin Agg	Virgin Agg	Virgin Agg	Virgin Agg	Virgin Agg
% Wet	2.5	2.4	2.8	2.5	2.5	2.5
dryTPH	0	0	0	0	0	0
% Blend	0.0	0.0	0.0	0.0	0.0	0.0

**Material**

Type: Virgin Aggregate

Name:

Info:

Comment:

**F10 - Confirm Add**

**Esc - Cancel Add**

**ADP Mix 0**

0 TPH

130 °F

0.00 % m/A/C

%Dry	
Virgin Scale	na
Recycle Scale	na
Asphalt	0.0

Material	Recycle Agg	Recycle Agg
%Wet/ %mAC	2.0/14.00	2.0/13.75
dryTPH	0.0	0
% Blend	0.00	0.0

**Current Total 1's**

(Current) ADP Mix 0	280
ADP Mix 0	280.0

**Fuel Flow**

0.0 gpt

**1.3** gpm

Message Area

Asphalt Tank Num	70-22	94-22	Water
Sp. Gravity	1.032	1.034	0.00 TPH
Inventory	500	645	
Mix Unit Empty	N/A	1517%	

Oil L 48 °F 9.0 TPH 0.00 % m/A/C

Material	Virgin Agg	Virgin Agg	Virgin Agg	Virgin Agg	Virgin Agg	Virgin Agg
% Wet	2.5	2.4	2.8	2.5	2.5	2.5
dryTPH	0	0	0	0	0	0
% Blend	0.0	0.0	0.0	0.0	0.0	0.0

Type:

Name:

Info:

Comment:

Material

- Esc - Escape
- F1 - Goto Another Material
- F2 - Add Another Material
- F4 - Remove This Material
- F5 - Rename This Material
- F6 - Edit This Material



Material	Recycle Agg	Recycle Agg	
%Wet/%mAC	2.0/14.00	2.0/13.75	2.0 % Wet + dryTPH
dryTPH	0.0	0	
% Blend	0.00	0.0	

0.00 % mAC

Current Total 1's  
 (Current) ADP Mix 0: 280  
 ADP Mix 0: 280.0

Fuel Flow  
 0.0 gpt  
 1.3 gpm

Message Area



Material	Virgin Agg	Virgin Agg	Virgin Agg	Virgin Agg	Virgin Agg	Virgin Agg
% Wet	2.5	2.4	2.8	2.5	2.5	2.5
dryTPH	0	0	0	0	0	0
% Bleed	0.0	0.0	0.0	0.0	0.0	0.0



Type:

Name:

Info:

Comment:

Esc - Escape

**Change Material Name**

New Material Name:

Changing the Material Name does NOT create new totals for this Material. It is NOT recommended that you change the Material name.

Are you sure you want to change the name of this Material?

**F10 - Confirm**

**Esc - Cancel**

	%Dry
Virgin Scale	na
Recycle Scale	na
Asphalt	0.0

Material	Recycle Agg	Recycle Agg
%Wet/%SAC	2.0/14.00	2.0/13.75
dryTPH	0.0	0
% Bleed	0.00	0.0



Material

Current Total 1's

ADP Mix 0	280
0	280.0

Fuel Flow

0.0 gpt

1.3 gpm

Message Area



Material	Virgin Agg	Virgin Agg	Virgin Agg	Virgin Agg	Virgin Agg	Virgin Agg
% Wet	2.5	2.4	2.8	2.5	2.5	2.5
dryTPH	0	0	0	0	0	0
% Blend	0.0	0.0	0.0	0.0	0.0	0.0

**Material**

Type:

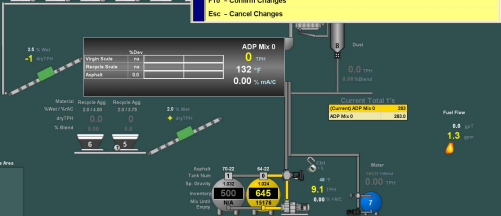
Name:

Info:

Comment:

**F10 - Confirm Changes**

**Esc - Cancel Changes**



Message Area





Material	Virgin Agg	Virgin Agg	Virgin Agg	Virgin Agg	Virgin Agg	Virgin Agg
% Wet	2.4	2.4	2.8	2.5	2.5	2.8
dryTPH	0	0	0	0	0	0
% Bleed	0.0	0.0	0.0	0.0	0.0	0.0



Message Area

Asphalt Tank Num	TG-32	94-32
Sp. Gravity	1.032	1.034
Inventory	500	645
Mix Unit Empty	N/A	15176



(Current) ADP Mix 0	280
ADP Mix 0	280.0

48°F  
9.0 TPH  
0.00 % HAC



Fuel Flow  
0.0 gph  
1.3 gpm

Material Properties

A/C Temperature	48 °F (measured by probe)
Moisture is a % of wet material weight.	
Virgin Scale	2.5 % wet (from feeder values)
Recycle Scale	2.0 % wet (from feeder values)

Feeder	Material Name	Cal Date		
Virgin 1	Virgin Agg	02/17/2011	2.1 % wet	
Virgin 2	Virgin Agg	02/17/2011	2.4 % wet	
Virgin 3	Virgin Agg	02/17/2011	2.8 % wet	
Virgin 4	Virgin Agg	02/17/2011	2.5 % wet	
Recycle 5	Recycle Agg	02/17/2011	2.0 % wet	3.75 % rec A/C
Recycle 6	Recycle Agg	02/17/2011	2.0 % wet	4.00 % rec A/C
Water 7	Water	02/17/2011	100 % H2O	
Dust 8	Dust	02/17/2011	0 % wet	
Virgin 11	Virgin Agg	02/17/2011	2.5 % wet	
Virgin 12	Virgin Agg	02/17/2011	2.8 % wet	
Virgin 13	Virgin Agg	02/17/2011	2.4 % wet	
Virgin 14	Virgin Agg	02/17/2011	2.6 % wet	

F10 - Confirm Changes  
Esc - Cancel Changes

Material	Virgin Agg	Virgin Agg	Virgin Agg	Virgin Agg	Virgin Agg	Virgin Agg
% Wet	2.4	2.4	2.8	2.5	2.5	2.8
dryTPH	0	0	0	0	0	0
% Bleed	0.0	0.0	0.0	0.0	0.0	0.0



Material	Recycle Agg	Recycle Agg
%Wet/%AC	2.0/14.00	2.0/13.75
dryTPH	0.0	0
% Bleed	0.00	0.0



A/C Temperature	48 °F (measured by probe)
Moisture is a % of wet material weight.	
Virgin Scale	2.5 % wet (from feeder values)
Recycle Scale	2.0 % wet (from feeder values)

Material Properties

Feeder	Material Name	Cal Date		
Virgin 1	Virgin Agg	02/17/2011	2.1 % wet	
Virgin 2	Virgin Agg	02/17/2011	2.4 % wet	
Virgin 3	Virgin Agg	02/17/2011	2.8 % wet	
Virgin 4	Virgin Agg	02/17/2011	2.5 % wet	
Recycle 5	Recycle Agg	02/17/2011	2.0 % wet	3.75 % rec AC
Recycle 6	Recycle Agg	02/17/2011	2.0 % wet	4.00 % rec AC
Water 7	Water	02/17/2011	100 % H2O	
Dust 8	Dust	02/17/2011	0 % wet	
Virgin 11	Virgin Agg	02/17/2011	2.5 % wet	
Virgin 12	Virgin Agg	02/17/2011	2.8 % wet	
Virgin 13	Virgin Agg	02/17/2011	2.4 % wet	
Virgin 14	Virgin Agg	02/17/2011	2.4 % wet	

F10 - Confirm Changes  
Esc - Cancel Changes

Message Area



(Current) ADP Mix 0	200
ADP Mix 0	200.0

Fuel Flow  
0.0 gph  
1.3 gpm

Material	Virgin Agg	Virgin Agg	Virgin Agg	Virgin Agg	Virgin Agg	Virgin Agg
% Wet	2.4	2.4	2.8	2.5	2.5	2.8
dryTPH	0	0	0	0	0	0
% Blend	0.0	0.0	0.0	0.0	0.0	0.0



Material	Recycle Agg	Recycle Agg
%Wet/%AC	2.0/14.00	2.0/13.75
dryTPH	0.0	0
% Blend	0.00	0.0



A/C Temperature	48 °F (measured by probe)
Moisture is a % of wet material weight.	
Virgin Scale	2.5 % wet (from feeder values)
Recycle Scale	2.0 % wet (from feeder values)

Feeder	Material Name	Cal Date		
Virgin 1	Virgin Agg	02/17/2011	2.1 % wet	
Virgin 2	Virgin Agg	02/17/2011	2.4 % wet	
Virgin 3	Virgin Agg	02/17/2011	2.8 % wet	
Virgin 4	Virgin Agg	02/17/2011	2.5 % wet	
Recycle 5	Recycle Agg	02/17/2011	2.0 % wet	3.75 % rec AC
Recycle 6	Recycle Agg	02/17/2011	2.0 % wet	4.00 % rec AC
Water 7	Water	02/17/2011	100 % H2O	
Dust 8	Dust	02/17/2011	0 % wet	
Virgin 11	Virgin Agg	02/17/2011	3.5 % wet	
Virgin 12	Virgin Agg	02/17/2011	3.0 % wet	
Virgin 13	Virgin Agg	02/17/2011	2.4 % wet	
Virgin 14	Virgin Agg	02/17/2011	3.6 % wet	

- Esc - Escape
- F1 - Edit Properties
- F3 - Change Material
- F5 - Material List

Message Area



1.3 ppm

Material	Virgin Agg	Virgin Agg	Virgin Agg	Virgin Agg	Virgin Agg	Virgin Agg
% Wet	2.5	2.4	2.8	2.5	2.5	2.5
dryTPH	0	0	0	0	0	0
% Blend	0.0	0.0	0.0	0.0	0.0	0.0

**Material**

Type:

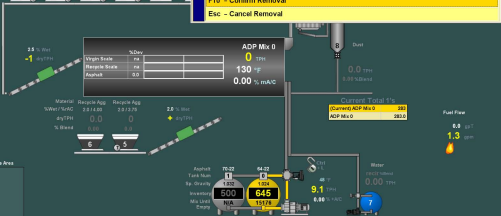
Name:

Info:

Comment:

**F10 - Confirm Removal**

**Esc - Cancel Removal**

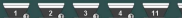


		%Dry	
Virgin Scale	na		
Recycle Scale	na		
Asphalt	0.0		

Material	Recycle Agg	Recycle Agg	
%Wet/%mAC	2.0/14.00	2.0/13.75	2.0 % Wet + dryTPH
dryTPH	0.0	0	
% Blend	0.00	0.0	

Message Area

Material	Virgin Agg	Virgin Agg	Virgin Agg	Virgin Agg	Virgin Agg	Virgin Agg
% Wet	2.5	2.4	2.8	2.5	2.5	2.5
dryTPH	0	0	0	0	0	0
% Blend	0.0	0.0	0.0	0.0	0.0	0.0



Material Type	MaterialName	Info	Comment
Virgin Aggregate	1"		
Virgin Aggregate	1.5"		
Virgin Aggregate	1/2"		
Virgin Aggregate	1/4"		
Virgin Aggregate	3"		
Virgin Aggregate	3/4"		
Virgin Aggregate	Virgin Agg		
Recycle Aggregate	Recycle Agg		

**F10 - Confirm Selection**

**Esc - Cancel Selection**

2.5 % Wet  
-1 dryTPH

		%Dry	
Virgin Scale	na		
Recycle Scale	na		
Asphalt	0.0		

ADP Mix 0  
0 TPH  
130 °F  
0.00 % m/A/C

Dust  
0.0 TPH  
0.00 % Blend

Material	Recycle Agg	Recycle Agg
%Wet/ %mAC	2.0 / 4.00	2.0 / 3.75
dryTPH	0.0	0
% Blend	0.00	0.0

2.0 % Wet  
+1 dryTPH



Current Total 1's

(Current) ADP Mix 0	280
ADP Mix 0	280.0

Fuel Flow

0.0 gph  
1.3 gpm

Message Area

Asphalt  
Tank Num  
Sp. Gravity  
Inventory  
Mix Unit  
Empy

70-32  
1  
1.032  
500  
NA

94-32  
0  
1.034  
645  
15176

Oil  
L  
40 °F  
9.0 TPH  
0.00 % mAC

Water  
pH/Cl/Temp  
0.00 TPH



Material	Virgin Agg	Virgin Agg	Virgin Agg	Virgin Agg	Virgin Agg
% Wet	2.5	2.4	2.8	2.5	2.5
dryTPH	0	0	0	0	0
% Bleed	0.0	0.0	0.0	0.0	0.0



Material	Recycle Agg	Recycle Agg
%Wet/%AC	2.0/14.00	2.0/13.75
dryTPH	0.0	0
% Bleed	0.00	0.0



Material Totals

Totals By:  
**All Mix Formulas**  
 Single Mix Formula

	Total 1	Total 2	Non-Reset
All Mixes	283.99	283.99	283.99
Virgin Scale	221.60	221.60	221.60
Recycle Scale	54.80	54.80	54.80
Dust Loss	5.49	5.49	5.49
Fuel Meter	0.00	0.00	0.00
64-22	13.06	13.06	13.06
Virgin Agg	210.91	210.91	210.91
Recycle Agg	52.71	52.71	52.71

Esc - Escape

F4 - Print Report

F5 - Equipment Totals

F6 - Go To Reports Screen

F7 - Clear All Total 1's

F8 - Clear All Total 2's

Current Total 1's

(Current) ADP Mix 0	283
ADP Mix 0	283.0

Fuel Flow

0.0 gph  
**1.3** gph

Message Area

Asphalt  
 Tank Num  
 Sp. Gravity  
 Inventory  
 Mix Unit  
 Empty

70-22  
**1**  
 1.032  
 500  
 NA

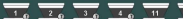
64-22  
**0**  
 1.034  
 645  
 15176

40 T  
**9.0** TPH  
 0.00 % HAC

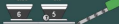
Water  
 (PACT) Inlet  
 0.00 TPH

**7**

Material	Virgin Agg	Virgin Agg	Virgin Agg	Virgin Agg	Virgin Agg	Virgin Agg
% Wet	2.5	2.4	2.8	2.5	2.5	0.0
dryTPH	0	0	0	0	0	0
% Blend	0.0	0.0	0.0	0.0	0.0	0.0



Material	Recycle Agg	Recycle Agg
%Wet/%m/c	2.0/14.00	2.0/13.75
dryTPH	0.0	0
% Blend	0.00	0.0



Mix Formula

Name:  Job Mix Number:

Info:

Comment:

Asphalt: 64-22  Is Active

Asphalt Blend:  % m/c Dustless:  % of Total Aggregate

Feeder	Blend %	Material Name	Call Date
Virgin 1	20.0 % of Desired Aggregate	Virgin Agg	02/17/2011
Virgin 2	20.0 % of Desired Aggregate	Virgin Agg	02/17/2011
Virgin 3	20.0 % of Desired Aggregate	Virgin Agg	02/17/2011
Virgin 4	20.0 % of Desired Aggregate	Virgin Agg	02/17/2011
Recycle 5	20.0 % of Desired Aggregate	Recycle Agg	02/17/2011
Recycle 6	0.00 % of Desired Aggregate	Recycle Agg	02/17/2011
Water 7	0.00 % of Added Asphalt	Water	02/17/2011
Dust 8	0.00 % of Total Aggregate	Dust	02/17/2011
Virgin 11	0.0 % of Desired Aggregate	Virgin Agg	02/17/2011
Virgin 12	0.0 % of Desired Aggregate	Virgin Agg	02/17/2011
Virgin 13	0.0 % of Desired Aggregate	Virgin Agg	02/17/2011
Virgin 14	0.0 % of Desired Aggregate	Virgin Agg	02/17/2011

F10 - Confirm Add

Esc - Cancel Add

Message Area



Material	Virgin Agg	Virgin Agg	Virgin Agg	Virgin Agg	Virgin Agg	Virgin Agg	Virgin Agg	Virgin Agg
% Wet	2.5	2.4	2.8	2.5	2.5	2.8	2.4	2.8
dryTPH	0	0	0	0	0	0	0	0
% Blend	0.0	0.0	0.0	0.0	0.0	0.0	0.0	0.0



Mix Name	Total 1	Total 2
ADP Mix 0	283.0	283.0
<b>Grand Total</b>	<b>283.0</b>	<b>283.0</b>

**Mix Totals**

- Esc - Escape
- F4 - Print Report
- F9 - Go To Reports Screen



**Current Total 1's**

(Current) ADP Mix 0	283
ADP Mix 0	283.0

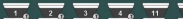


Message Area





Material	Virgin Agg	Virgin Agg	Virgin Agg	Virgin Agg	Virgin Agg	Virgin Agg
% Wet	2.5	2.4	2.8	2.5	2.5	0.0
dryTPH	0	0	0	0	0	0
% Blend	0.0	0.0	0.0	0.0	0.0	0.0



Material	Recycle Agg	Recycle Agg
%Wet/%mAC	2.0/14.00	2.0/13.75
dryTPH	0.0	0
% Blend	0.00	0.0



Mix Formula

Name:  Job Mix Number:

Info:

Comment:

Asphalt:   Is Active

Asphalt Blend:  % mAC Dustless:  % of Total Aggregate

Feeder	Blend %	Material Name	Call Date
Virgin 1	29.0 % of Desired Aggregate	Virgin Agg	02/17/2011
Virgin 2	29.0 % of Desired Aggregate	Virgin Agg	02/17/2011
Virgin 3	29.0 % of Desired Aggregate	Virgin Agg	02/17/2011
Virgin 4	29.0 % of Desired Aggregate	Virgin Agg	02/17/2011
Recycle 5	29.0 % of Desired Aggregate	Recycle Agg	02/17/2011
Recycle 6	0.00 % of Desired Aggregate	Recycle Agg	02/17/2011
Water 7	0.00 % of Added Asphalt	Water	02/17/2011
Dust 8	0.00 % of Total Aggregate	Dust	02/17/2011
Virgin 11	0.0 % of Desired Aggregate	Virgin Agg	02/17/2011
Virgin 12	0.0 % of Desired Aggregate	Virgin Agg	02/17/2011
Virgin 13	0.0 % of Desired Aggregate	Virgin Agg	02/17/2011
Virgin 14	0.0 % of Desired Aggregate	Virgin Agg	02/17/2011

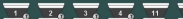
F10 - Confirm Changes

Esc - Cancel Changes

Message Area



Material	Virgin Agg	Virgin Agg	Virgin Agg	Virgin Agg	Virgin Agg	Virgin Agg
% Wet	2.5	2.4	2.8	2.5	2.5	0.0
dryTPH	0	0	0	0	0	0
% Blend	0.0	0.0	0.0	0.0	0.0	0.0



Material	Recycle Agg	Recycle Agg
%Wet/%AC	2.0/14.00	2.0/13.75
dryTPH	0.0	0
% Blend	0.00	0.0



Mix Formula

Name: **ADP Mix 0** Job Mix Number:

Info:

Comment:

Asphalt: **04-22**  Is Active

Asphalt Blend:  5.00 % m/A/C Dustless:  2.0 % of Total Aggregate

Feeder	Blend %	Material Name	Call Date
Virgin 1	20.0 % of Desired Aggregate	Virgin Agg	02/17/2011
Virgin 2	20.0 % of Desired Aggregate	Virgin Agg	02/17/2011
Virgin 3	20.0 % of Desired Aggregate	Virgin Agg	02/17/2011
Virgin 4	20.0 % of Desired Aggregate	Virgin Agg	02/17/2011
Recycle 5	20.0 % of Desired Aggregate	Recycle Agg	02/17/2011
Recycle 6	0.00 % of Desired Aggregate	Recycle Agg	02/17/2011
Water 7	0.00 % of Added Asphalt	Water	02/17/2011
Dust 8	0.00 % of Total Aggregate	Dust	02/17/2011
Virgin 11	0.0 % of Desired Aggregate	Virgin Agg	02/17/2011
Virgin 12	0.0 % of Desired Aggregate	Virgin Agg	02/17/2011
Virgin 13	0.0 % of Desired Aggregate	Virgin Agg	02/17/2011
Virgin 14	0.0 % of Desired Aggregate	Virgin Agg	02/17/2011

F10 - Confirm Removal

Esc - Cancel Removal

Message Area



Material	Virgin Agg	Virgin Agg	Virgin Agg	Virgin Agg	Virgin Agg	Virgin Agg
% Wet	2.5	2.4	2.8	2.5	2.5	2.5
dryTPH	0	0	0	0	0	0
% Blend	0.0	0.0	0.0	0.0	0.0	0.0

1 2 3 4 11



Material	Recycle Agg	Recycle Agg
%Wet / %AC	2.0 / 4.00	2.0 / 3.75
dryTPH	0.0	0
% Blend	0.00	0.0

6 5

Message Area

Name: **ADP Mix 0**Job Mix Number: Info: Comment: Asphalt: **44-22** Is ActiveAsphalt Blend:  5.00 % m/A/CDustless:  2.0 % of Total Aggregate

Feeder	Blend %	Material Name	Call Date
Virgin 1	20.0 % of Desired Aggregate	Virgin Agg	02/17/2011
Virgin 2	20.0 % of Desired Aggregate	Virgin Agg	02/17/2011
		Virgin Agg	02/17/2011
		Virgin Agg	02/17/2011
		Recycle Agg	02/17/2011
		Water	02/17/2011
		Dust	02/17/2011
		Virgin Agg	02/17/2011
		Virgin Agg	02/17/2011
		Virgin Agg	02/17/2011
		Virgin Agg	02/17/2011

New Mix Name: **ADP Mix 0**

Changing the Mix Name does NOT create new totals for this Mix. It is NOT recommended that you change the Mix name.

Are you sure you want to change the name of this Mix?

F10 - Confirm

Esc - Cancel

F2 - Add Another Mix Formula

F4 - Remove This Mix Formula

F5 - Rename This Mix Formula

F6 - Edit This Mix Formula

Inventory

500

645

3.0 TPH

Mix Used

NA

15176

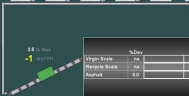
0.00 % m/A/C

Empty

7

Material	Virgin Agg	Virgin Agg	Virgin Agg	Virgin Agg	Virgin Agg	Virgin Agg
% Wet	2.5	2.4	2.8	2.5	2.5	2.5
dryTPH	0	0	0	0	0	0
% Blend	0.0	0.0	0.0	0.0	0.0	0.0

1	2	3	4	11
---	---	---	---	----



Material	Recycle Agg	Recycle Agg
%Wet/%AC	2.0/14.00	2.0/13.75
dryTPH	0.0	0
% Blend	0.00	0.0

6	5
---	---

Message Area

Mix Formula

Name:  Job Mix Number: Info: Comment: Asphalt:   Is ActiveAsphalt Blend:  % m/AC Dustless:  % of Total Aggregate

Feeder	Blend %	Material Name	Call Date
Virgin 1	20.0 % of Desired Aggregate	Virgin Agg	02/17/2011
Virgin 2	20.0 % of Desired Aggregate	Virgin Agg	02/17/2011
Virgin 3	20.0 % of Desired Aggregate	Virgin Agg	02/17/2011
Virgin 4	20.0 % of Desired Aggregate	Virgin Agg	02/17/2011
Recycle 5	20.0 % of Desired Aggregate	Recycle Agg	02/17/2011
Recycle 6	0.00 % of Desired Aggregate	Recycle Agg	02/17/2011
Water 7	0.00 % of Added Asphalt	Water	02/17/2011
Dust 8	0.00 % of Total Aggregate	Dust	02/17/2011
Virgin 11	0.0 % of Desired Aggregate	Virgin Agg	02/17/2011
Virgin 12	0.0 % of Desired Aggregate	Virgin Agg	02/17/2011
Virgin 13	0.0 % of Desired Aggregate	Virgin Agg	02/17/2011
Virgin 14	0.0 % of Desired Aggregate	Virgin Agg	02/17/2011

Esc - Escape

F1 - Goto Another Mix Formula

F2 - Add Another Mix Formula

F4 - Remove This Mix Formula

F5 - Rename This Mix Formula

F6 - Edit This Mix Formula

Inventory	500	645	3.0
Mix Unit	NA	15176	0.00 % AC
Empty			7

Material	Virgin Agg	Virgin Agg	Virgin Agg	Virgin Agg	Virgin Agg	Virgin Agg
% Wet	2.5	2.4	2.8	2.5	2.5	2.5
dryTPH	0	0	0	0	0	0
% Blend	0.0	0.0	0.0	0.0	0.0	0.0



Material	Recycle Agg	Recycle Agg	2.8 % Wet
%Wet/%AC	2.0/14.00	2.0/13.75	dryTPH
dryTPH	0.0	0	+
% Blend	0.00	0.0	



MixName	Job Mix Number	Info	UseDa
ADP Mix 0			03/17/11
ADP Mix 1			
ADP Mix 2			
ADP Mix 3			
ADP Mix 4			
ADP Mix 5			
ADP Mix 6			
ADP Mix 7			
ADP Mix 8			

**Mix Formula**

F10 - Confirm Selection  
Esc - Cancel Selection

Message Area



F10 - Confirm Changes

Esc - Cancel Changes

## Mix Temp Calibration by Average

Mix Temp

**131.3 °F**

Averaged for	4 sec
Average value	131.30 °F

Mix Temp Zero	10000.0
Mix Temp Span	1369.04

Message Area

## Mix Temp Calibration by Average

Mix Temp

**130.6 °F**

Averaged for	1 sec
Average value	130.58 °F

Mix Temp Zero	10000.0
Mix Temp Span	1369.04

Average Temp

If the actual averaged  
value is

130.58 °F

Then the average  
measured error is

0.0000 %

F10 - Confirm Changes

Esc - Cancel Changes

Message Area

## Mix Temp Calibration by Average

Mix Temp

**130.6 °F**

Averaged for	1 sec
Average value	130.58 °F

Mix Temp Zero	10000.0
Mix Temp Span	1369.04

If the actual averaged  
value is

130.58 °F

Then the average  
measured error is

0.0000 %

Esc - Escape

F1 - Edit Actual

F4 - Auto Recalibrate

F8 - Print Calibration

Average Temp



## Mix Temp Calibration by Average

Mix Temp

**130.6 °F**

Averaged for	6 sec
Average value	130.57 °F

Mix Temp Zero	10000.0
Mix Temp Span	1369.04

Zero Calibration

Pressing F10 will adjust the meter's "Zero" so that the average value currently displayed will be zeroed.

Esc - Escape

F10 - Zero the Device

Message Area

**Esc - Escape**

- F1 - Restart the Averaging Interval
- F3 - Zero the Measured Average Value
- F8 - Evaluate & Calibrate
- F10 - Edit Calibration

**Mix Temp Calibration  
by Average**

Mix Temp

**130.6 °F**

Averaged for	1 sec
Average value	130.56 °F

Mix Temp Zero	10000.0
Mix Temp Span	1369.04

Message Area

Material	Virgin Agg	Virgin Agg	Virgin Agg	Virgin Agg	Virgin Agg	Virgin Agg	Virgin Agg	Virgin Agg
% Wet	2.5	2.4	2.8	2.5	2.5	2.8	2.4	2.8
dryTPH	0	0	0	0	0	0	0	0
% Blend	0.0	0.0	0.0	0.0	0.0	0.0	0.0	0.0



- Options**
- Esc - Back to Main Screen
  - F1 - Production Targets
  - F2 - Mix Formulas
  - F3 - Material Properties
  - F4 - ZeroTrac ON/OFF
  - F5 - Asphalt Tanks
  - F6 - Spot Check
  - F7 - Feeder Cleanout
  - F8 - Utilities Menu
  - F9 - Print Data

2.5 % Wet  
-1 dryTPH

**ADP Mix 0**

0 TPH

130 °F

0.00 % m/A/C

%Dry	
Virgin Scale	na
Recycle Scale	na
Asphalt	0.0

8 Dust

0.0 TPH

0.00 % Blend

Material	Recycle Agg	Recycle Agg
%Wet/ %mAC	2.0/14.00	2.0/13.75
dryTPH	0.0	0
% Blend	0.00	0.0

2.5 % Wet  
+1 dryTPH

6

5

Current Total 1's

(Current) ADP Mix 0	280
ADP Mix 0	280.0

Fuel Flow

0.0 gpt

1.3 gpm

Message Area

Asphalt Tank Man

70-22

1

1030

Inventory

500

Mix Unit Empty

N/A

94-22

0

1034

Inventory

645

Mix Unit Empty

15176

Oil

48 °F

9.0 TPH

0.00 % mAC

Water

Recycled

0.00 TPH

7

Material	Virgin Agg	Virgin Agg	Virgin Agg	Virgin Agg	Virgin Agg	Virgin Agg	Virgin Agg	Virgin Agg
% Mat	2.1	2.4	2.8	2.5	2.5	2.8	2.4	2.8
dryTPH	0	0	0	0	0	0	0	0
% Blend	0.0	0.0	0.0	0.0	0.0	0.0	0.0	0.0



ADP Mix 0

**0** TPH

132 °F

0.00 %mAC

	%Dev		
Virgin Scale	na		
Recycle Scale	na		
Asphalt	0.0		



Fuel Flow

0.0 gph

**1.3** gph

Message Area

Asphalt Tank Num	70-02	84-02	Oil L	Water
Sp. Gravity	1.032	1.034	48 °F	0.00 TPH
Inventory	500	645	9.0 TPH	
Mix Unit Empty	N/A	15178	0.00 % mAC	

Material	Virgin Agg	Virgin Agg	Virgin Agg	Virgin Agg	Virgin Agg	Virgin Agg	Virgin Agg	Virgin Agg
% Wet	2.5	2.4	2.8	2.5	2.5	2.8	2.4	2.8
dryTPH	0	0	0	0	0	0	0	0
% Blend	0.0	0.0	0.0	0.0	0.0	0.0	0.0	0.0



Mix: **ADP Mix 0**

Aggregate Rates	0 TPH
Production Total	0 T
A/C Recirc. Rate	9.0 TPH

F10 - Confirm  
Esc - Cancel

2.5 % Wet  
-1 dryTPH

**ADP Mix 0**

0 TPH  
130 °F  
0.00 % m/A/C

%Dry	
Virgin Scale	na
Recycle Scale	na
Asphalt	0.0

Material	Recycle Agg	Recycle Agg
%Wet/ %mAC	2.0/4.00	2.0/3.75
dryTPH	0.0	0
% Blend	0.00	0.0

2.0 % Wet  
+1 dryTPH



Current Total 1's

(Current) ADP Mix 0	280
ADP Mix 0	280.0

Fuel Flow  
0.0 gpt  
1.3 gpm

Message Area

Asphalt Tank Num	70-22	94-22	Water
Sp. Gravity	1.032	1.034	0.00 TPH
Inventory	500	645	
Mix Unit Empty	N/A	15178	

Oil L  
48 °F  
9.0 TPH  
0.00 % mAC

F10 - Confirm Changes

Esc - Cancel Changes

## Recycle Scale Calibration by Average

Recycle Scale

**0.1 wTPH**

Averaged for 1 sec

Average value +.1115 wTPH

Threshold 10 TPH

Damping Filter 5 sec

Calibrate Zero 0.0 @ = 14342

Calibrate High +.196 @ + 7275

Calibrate Mid +.128 @ + 3337

Calibrate Low off @ + off

Recycle Scale

0.1 wTPH

Message Area

## Recycle Scale Calibration by Average

Recycle Scale

**0.1 wTPH**

Averaged for	2 sec
Average value	+1.1095 wTPH

Threshold	10 TPH
Damping Filter	5 sec

Calibrate Zero	0.0 @ =	14342
Calibrate High	+1.196 @ +	7275
Calibrate Mid	+1.128 @ +	3337
Calibrate Low	off @ +	off

Scale Average

If the actual averaged  
value is

**+1.1095** TPH

Then the average  
measured error is

**0.0000** %

F10 - Confirm Changes

Esc - Cancel Changes

Recycle Scale

0.1095 wTPH

Message Area

## Recycle Scale Calibration by Average

Recycle Scale

**0.1 wTPH**

Averaged for	2 sec
Average value	+1.095 wTPH

Threshold	10 TPH
Damping Filter	5 sec

Calibrate Zero	0.0 @ =	14342
Calibrate High	+1.96 @ +	7275
Calibrate Mid	+1.28 @ +	3337
Calibrate Low	off @ +	off

If the actual averaged  
value is

+1.095 TPH

Then the average  
measured error is

0.0000 %

Scale Average

Esc - Escape

F1 - Edit Actual

F4 - Auto Recalibrate

F8 - Print Calibration

Recycle Scale

0.1 wTPH

Message Area



Zero Calibration

Pressing F10 will adjust the meter's "Zero" so that the average value currently displayed will be zeroed.

Esc - Escape

F10 - Zero the Device

## Recycle Scale Calibration by Average

Recycle Scale

0.1 wTPH

Averaged for	6 sec
Average value	+1.108 wTPH

Threshold	10 TPH
Damping Filter	5 sec

Calibrate Zero	0.0 @ =	14342
Calibrate High	+1.196 @ +	7275
Calibrate Mid	+1.128 @ +	3337
Calibrate Low	off @ +	off

Recycle Scale

0.1 wTPH

Message Area

**Esc - Escape**

F1 - Restart the Averaging Interval

F3 - Zero the Measured Average Value

F8 - Evaluate &amp; Calibrate

F10 - Edit Calibration

## Recycle Scale Calibration by Average

### Recycle Scale

# 0.1 wTPH

Averaged for	2 sec
--------------	-------

Average value	+1.1115 wTPH
---------------	--------------

Threshold	10 TPH
-----------	--------

Damping Filter	5 sec
----------------	-------

Calibrate Zero	0.0 @ =	14342
----------------	---------	-------

Calibrate High	+1.196 @ +	7275
----------------	------------	------

Calibrate Mid	+1.128 @ +	3337
---------------	------------	------

Calibrate Low	off @ +	off
---------------	---------	-----

Recycle Scale

0.1 wTPH

Message Area

Material	Virgin Agg	Virgin Agg	Virgin Agg	Virgin Agg	Virgin Agg	Virgin Agg	Virgin Agg	Virgin Agg
% Wet	2.5	2.4	2.8	2.5	2.5	2.8	2.4	2.8
dryTPH	0	0	0	0	0	0	0	0
% Blend	0.0	0.0	0.0	0.0	0.0	0.0	0.0	0.0



### Recycle Agg

Measured By:	Speed Sensor
Blended By:	% of Desired Aggregate
Scaled By:	Recycle Scale

2.0 / 3.75 %Wet / %AC

0 TPH

0.0 %Blend

**5**

Material	Recycle Agg	Recycle
%Wet / %AC	2.0 / 4.00	2.0 / 4.00
dryTPH	0.0	0.0
% Blend	0.00	0.00



Dust  
0.0 TPH  
0.0 %Blend

Current Total 1's

ADP Mix 0	280
Mix 0	280.0

Fuel Flow  
0.0 gph  
**1.3** gpm

Message Area

Agg #1 Tank Man

Sp. Gravity: 1.032

Inventory: 500

Mix Used: N/A

Empty

TO-22

1

94-22

0

1.034

645

15176

Oil L

48 T

9.0 TPH

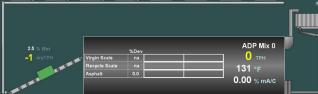
0.00 % FAC

Water

Recycled

0.00 TPH

Material	Virgin Agg	Virgin Agg	Virgin Agg	Virgin Agg	Virgin Agg	Virgin Agg	Virgin Agg	Virgin Agg
% Wet	2.5	2.4	2.8	2.5	2.5	2.8	2.4	2.8
dryTPH	0	0	0	0	0	0	0	0
% Bleed	0.0	0.0	0.0	0.0	0.0	0.0	0.0	0.0



**ADP Mix 0**

0 TPH

131 °F

0.00 % mA/C

%Dry	
Virgin Scale	na
Recycle Scale	na
Asphalt	0.0

Material	Recycle Agg	Recycle Agg
%Wet/ %AAC	2.0/14.00	2.0/13.75
dryTPH	0.0	0
% Bleed	0.00	0.0



Message Area

Asphalt Tank Num	T0-02	04-02
Sp. Gravity	1.032	1.024
Inventory	500	645
Mix Unit Empty	N/A	15176

Current Data	
Recycle Scale	+1.11 wTPH
@ 2.0 % Wet	+ dTPH
Raw Data	
Load Cell raw	14330 pps
BeltSpeed raw	100 pps
Error Limit	10.00 %
Error Shutdown	0 sec
Delay to PCI	2 sec
Threshold	10 TPH
Damping Filter	5 sec
Calibrate Zero	0.0 @ = 14343
Calibrate High	+196 @ + 7275
Calibrate Mid	+128 @ + 3337
Calibrate Low	off @ + off

Recycle Scale Information

- Esc - Escape**
- F1 - 6 Minute Test
  - F2 - Calibrate by Average
  - F3 - Calibrate by Sample
  - F4 - Zero Track On/Off
  - F6 - Go To Delays
  - F7 - Go To System Options
  - F8 - Go To Material Properties
  - F10 - Edit

Material	Recycle App	Recycle App
%Wet / %wAG	0.0 / 0.00	0.0 / 0.00
dryTPH	0.0	0
% Blend	0.00	0.0



## Test Targets

Mix: ADP Mix 0

0.00 TPH

10.00 wT

F10 - Confirm Changes

Esc - Cancel Changes

## Recycle Scale Calibration by Sample

Recycle Scale

0.1 wTPH

Totalizer Locked 11.06 wT

Test Time 4 sec

Threshold 10 TPH

Damping Filter 5 sec

Calibrate Zero 0.0 @ = 14342

Calibrate High +.196 @ + 7275

Calibrate Mid +.128 @ + 3337

Calibrate Low off @ + off

Message Area

Material	Recycle App	Recycle App
%Wet / %wAG	0.0 / 0.00	0.0 / 0.00
dryTPH	0.0	0
% Bleed	0.00	0.0



If the actual total is  
 wT

Then the current  
 Scale error is  
 %

Scale Error

F10 - Confirm Changes

Esc - Cancel Changes

## Recycle Scale Calibration by Sample

Recycle Scale

0.1 wTPH

Totalizer Locked	11.06 wT
Test Time	4 sec

Threshold	10 TPH
Damping Filter	5 sec

Calibrate Zero	0.0 @ =	14342
Calibrate High	+196 @ +	7275
Calibrate Mid	+128 @ +	3337
Calibrate Low	off @ +	off

Message Area

Material	Recycle App	Recycle App
%Wet / %wAG	0.0 / 0.00	0.0 / 0.00
dryTPH	0.0	0
% Bleed	0.00	0.0



## Recycle Scale Calibration by Sample

Recycle Scale

**0.1** wTPH

Totalizer Locked	-0.002 wT
Test Time	3 sec

Threshold	10 TPH
Damping Filter	5 sec

Calibrate Zero	0.0 @ =	14343
Calibrate High	+196 @ +	7275
Calibrate Mid	+128 @ +	3337
Calibrate Low	off @ +	off

If the actual total is  
-0.0021 wT

Then the current  
Scale error is  
0.00 %

Scale Error

Truck Calculator

Tare	17440.00 lb
Gross	0.0000 lb
Net	0.0000 T

F10 - Use Truck Net

Esc - Cancel Edit

Message Area

Material	Recycle Agg	Recycle Agg
%Wet / %AnG	2.0 / 4.00	2.0 / 2.75
dryTPH	0.0	0
% Blend	0.00	0.0



## Recycle Scale Calibration by Sample

Recycle Scale

**0.1** wTPH

Totalizer Locked	11.06 wT
Test Time	4 sec

Threshold	10 TPH
Damping Filter	5 sec

Calibrate Zero	0.0 @ =	14342
Calibrate High	+196 @ +	7275
Calibrate Mid	+128 @ +	3337
Calibrate Low	off @ +	off

If the actual total is  
 wT  
 Then the current  
 Scale error is  
 %

Esc - Escape

F1 - Edit Actual

F3 - Edit Truck Info

F4 - Auto Recalibrate

F9 - Print Calibration

Truck Calculator

Tare	17440.0 lb
Gross	0.0000 lb
Net	0.0000 T

Scale Error

Message Area



Material	Recycle App	Recycle App
%Wet / %wAG	0.0 / 0.00	0.0 / 0.00
dryTPH	0.0	0
% Blend	0.00	0.0



## Test Targets

Mix: ADP Mix 0

0.00 TPH

10.00 wT

F10 - Confirm

Esc - Cancel

## Recycle Scale Calibration by Sample

Recycle Scale

0.1 wTPH

Totalizer Locked 11.06 wT

Test Time 4 sec

Threshold 10 TPH

Damping Filter 5 sec

Calibrate Zero 0.0 @ = 14342

Calibrate High +.196 @ + 7275

Calibrate Mid +.128 @ + 3337

Calibrate Low off @ + off

Message Area

Material	Recycle App	Recycle App
% Wet / % AG	0.0 / 4.00	0.0 / 2.75
dry TPH	0.0	0
% Blend	0.00	0.0



## Recycle Scale Calibration by Sample

Recycle Scale

**0.1** wTPH

Totalizer Locked	11.06 wT
Test Time	4 sec

Threshold	10 TPH
Damping Filter	5 sec

Calibrate Zero	0.0 @ =	14342
Calibrate High	+196 @ +	7275
Calibrate Mid	+128 @ +	3337
Calibrate Low	off @ +	off

### Test Targets

Mix: ADP Mix 0

0.00 TPH

10.00 wT

### Esc - Escape

F2 - Set Up Mix

F3 - Zero Scale

F5 - Change Targets

F6 - Start Test

F8 - Evaluate & Calibrate

F10 - Edit Calibration

Message Area

Material	Virgin Agg	Virgin Agg	Virgin Agg	Virgin Agg	Virgin Agg	Virgin Agg	Virgin Agg	Virgin Agg
% Wet	2.5	2.4	2.8	2.5	2.5	2.8	2.4	2.8
dryTPH	0	0	0	0	0	0	0	0
% Blend	0.0	0.0	0.0	0.0	0.0	0.0	0.0	0.0



### Recycle Scale

2.0 % Wet  
+ dryTPH

%Dry	
Virgin Scale	na
Recycle Scale	na
Asphalt	0.0

Material: Recycle Agg, Recycle Agg  
 %Wet/ %WAC: 2.0/14.00, 2.0/13.75  
 dryTPH: 0.0, 0  
 % Blend: 0.00, 0.0

Dust

0.0 TPH  
0.00 % Blend

Current Total 1's

(Current) ADP Mix 0	280
ADP Mix 0	280.0

Fuel Flow

0.0 gPT  
**1.3** gpm

Message Area

Asphalt Tank Num	70-22	84-22	Water
Sp. Gravity	1.032	1.034	0.00 TPH
Inventory	500	645	
Mix Unit Empty	N/A	15178	

48 °F  
9.0 TPH  
0.00 % WAC

File Report

February 17, 2011  
1:17 pm

### Total 1 Report

<b>All Mixes</b>	565.96
Virgin Scale	443.19
Recycle Scale	199.60
Dust Loss	19.17
<b>Asphalt</b>	
Total	13.86
SA-22	13.86
<b>Material</b>	
Recycle Agg	52.79
Virgin Agg	219.91
<b>Crusher</b>	
Virgin 1	52.79
Virgin 2	52.79
Virgin 3	52.79
Virgin 4	52.79
Recycle 4	52.79
Virgin 5	8.00

Message Area

Esc - Escape

F2 - Print Report

F10 - View Report

## Reports

[Daily Totals](#)[Data Log](#)[Feeder Calibrations](#)[Material Totals - short](#)[Material Totals by Mix](#)[Material Totals per ...](#)[Material Totals](#)[Mix Formula](#)[Mix Totals](#)[Single Mix Formula](#)

Material	Virgin Agg	Virgin Agg	Virgin Agg	Virgin Agg	Virgin Agg	Virgin Agg	Virgin Agg	Virgin Agg
% Wet	2.5	2.4	2.8	2.5	2.5	2.8	2.4	2.8
dryTPH	0	0	0	0	0	0	0	0
% Blend	0.0	0.0	0.0	0.0	0.0	0.0	0.0	0.0



**CAUTION**

Choosing the CLEAR TOTAL 1 Option will Reset Mix and Material Total 1's to 0

**Esc - Escape**

**F10 - CLEAR TOTAL 1**

		%Dry
Virgin Scale	na	
Recycle Scale	na	
Asphalt	0.0	

Material	Recycle Agg	Recycle Agg	
%Wet/%sAC	2.0/14.00	2.0/13.75	2.8
dryTPH	0.0	0	dryTPH
% Blend	0.00	0.0	



Current Total 1's

(Current) ADP Mix 0	280
ADP Mix 0	280.0

Fuel Flow

0.0 gph

1.3 gpm

Message Area



Asphalt Tank Num	70-22	84-22	48 T	Water
Sp. Gravity	1.032	1.034	9.1 TPH	0.00 TPH
Inventory	500	645	0.00 % SAC	
Mix Unit Empty	NA	15176		

- Lists**
- Esc - Escape
  - F1 - Material
  - F3 - Asphalt

Material	Virgin Agg	Virgin Agg	Virgin Agg	Virgin Agg	Virgin Agg	Virgin Agg	Virgin Agg	Virgin Agg
% Wet	2.5	2.4	2.8	2.5	2.5	2.8	2.4	2.8
dryTPH	0	0	0	0	0	0	0	0
% Blend	0.0	0.0	0.0	0.0	0.0	0.0	0.0	0.0



Material	Recycle Agg	Recycle Agg
%Wet/ %mAC	2.0/14.00	2.0/13.75
dryTPH	0.0	0
% Blend	0.00	0.0

2.0 % Wet  
+1 dryTPH



Current Total 1's

(Current) ADP Mix 0	280
ADP Mix 0	280.0

Fuel Flow  
0.0 gPT  
1.3 gpm

Message Area



**Recordation**

- Esc - Escape
- F1 - Mix Formulas
- F2 - Materials Used
- F5 - Reports Screen
- F10 - Print All Calibration Values

Material	Virgin Agg	Virgin Agg	Virgin Agg	Virgin Agg	Virgin Agg	Virgin Agg	Virgin Agg	Virgin Agg
% Wet	2.5	2.4	2.8	2.5	2.5	2.8	2.4	2.8
dryTPH	0	0	0	0	0	0	0	0
% Blend	0.0	0.0	0.0	0.0	0.0	0.0	0.0	0.0

2.5 % Wet  
-1 dryTPH

ADP Mix 0	
Virgin Scale	na
Recycle Scale	na
Asphalt	0.0

0 TPH  
130 °F  
0.00 % m/A/C

Material	Recycle Agg	Recycle Agg
%Wet/ %mAC	2.0/14.00	2.0/13.75
dryTPH	0.0	0
% Blend	0.00	0.0

2.0 % Wet  
+ dryTPH

Dust

0.0 TPH  
0.00 % Blend

Current Total 1's

(Current) ADP Mix 0	280
ADP Mix 0	280.0

Fuel Flow

0.0 gPT  
1.3 gpm

Message Area

Tank Num	70-02	84-02
Sp. Gravity	1.032	1.034
Inventory	500	645
Mix Used	N/A	15178
Empty		

Oil L  
48 °F  
9.0 TPH  
0.00 % mAC

Water  
PAC/1000  
0.00 TPH

## Aggregate Scales

### Virgin Scale

**-0.6 wTPH**

Threshold	<b>10</b> TPH
Damping Filter	5 sec
Calibrate Zero	0.0 @ = 14400
Calibrate High	1.475 @ + 17251
Calibrate Mid	+836 @ + 10000
Calibrate Low	+681 @ + 8014

### Recycle Scale

**0.1 wTPH**

Threshold	10 TPH
Damping Filter	5 sec
Calibrate Zero	0.0 @ = 14342
Calibrate High	+196 @ + 7275
Calibrate Mid	+128 @ + 3337
Calibrate Low	off @ + off

F10 - Confirm Changes

Esc - Cancel Changes

Virgin Scale

25 % Wet

-1 dryTPH

CPU - 100 %

Recycle Scale

20 % Wet

0 dryTPH

CPU - 100 %

Message Area



## Aggregate Scales

### Virgin Scale

**-0.6 wTPH**

Threshold	10 TPH
Damping Filter	5 sec
Calibrate Zero	0.0 @ = 14398
Calibrate High	1.475 @ + 17251
Calibrate Mid	+836 @ + 10000
Calibrate Low	+681 @ + 8014

### Recycle Scale

**0.1 wTPH**

Threshold	10 TPH
Damping Filter	5 sec
Calibrate Zero	0.0 @ = 14342
Calibrate High	+196 @ + 7275
Calibrate Mid	+128 @ + 3337
Calibrate Low	off @ + off

Esc - Escape

F1 - 6 Minute Tests

F2 - Virgin Scale Calibrate by Average

F3 - Virgin Scale Calibrate by Sample

F4 - Virgin Scale Zero / Trac

F6 - Recycle Scale Calibrate by Average

F7 - Recycle Scale Calibrate by Sample

**F8 - Recycle Scale Zero / Trac**

F10 - Edit Calibration

Virgin Scale

25 % Wet

-1 dryTPH

0.0 @ = 14398

Recycle Scale

20 % Wet

0 dryTPH

0.0 @ = 14342

Message Area

## Aggregate Scales

### Virgin Scale

**-0.7 wTPH**

Threshold	10 TPH
Damping Filter	5 sec
Calibrate Zero	0.0 @ = 14399
Calibrate High	1.475 @ + 17251
Calibrate Mid	+836 @ + 10000
Calibrate Low	+681 @ + 8014

### Recycle Scale

**0.1 wTPH**

Threshold	10 TPH
Damping Filter	5 sec
Calibrate Zero	0.0 @ = 14342
Calibrate High	+196 @ + 7275
Calibrate Mid	+128 @ + 3337
Calibrate Low	off @ + off

Virgin Scale

25 % Wet

-1 dryTPH

Zero

SPC - 100 ppm

Recycle Scale

20 % Wet

0 dryTPH

SPC - 100 ppm

Message Area

Esc - Escape

F1 - 6 Minute Tests

F2 - Virgin Scale Calibrate by Average

F3 - Virgin Scale Calibrate by Sample

F4 - Virgin Scale Zero / Trac

F6 - Recycle Scale Calibrate by Average

F7 - Recycle Scale Calibrate by Sample

F8 - Recycle Scale Zero / Trac

F10 - Edit Calibration

## Aggregate Scales

### Virgin Scale

**-0.7 wTPH**

Threshold	10 TPH
Damping Filter	5 sec
Calibrate Zero	0.0 @ = 14400
Calibrate High	1.475 @ + 17251
Calibrate Mid	+836 @ + 10000
Calibrate Low	+681 @ + 8014

### Recycle Scale

**0.1 wTPH**

Threshold	10 TPH
Damping Filter	5 sec
Calibrate Zero	0.0 @ = 14342
Calibrate High	+196 @ + 7275
Calibrate Mid	+128 @ + 3337
Calibrate Low	off @ + off

Virgin Scale

25 % Wet

-1 dryTPH

SPC - 100 ppm

Recycle Scale

20 % Wet

0 dryTPH

SPC - 100 ppm

Message Area

Esc - Escape

F1 - 6 Minute Tests

F2 - Virgin Scale Calibrate by Average

F3 - Virgin Scale Calibrate by Sample

F4 - Virgin Scale Zero / Trac

F6 - Recycle Scale Calibrate by Average

F7 - Recycle Scale Calibrate by Sample

F8 - Recycle Scale Zero / Trac

F10 - Edit Calibration

**Aggregate Scales**

Virgin Scale

**-0.6** wTPH

Threshold	10 TPH
Damping Filter	5 sec

Calibrate Zero  
Calibrate High  
Calibrate Mid  
Calibrate Low

Recycle Scale

**0.1** wTPH

Threshold	10 TPH
Damping Filter	5 sec

Calibrate Zero	0.0 @ =	14342
Calibrate High	+ .196 @ +	7275
Calibrate Mid	+ .128 @ +	3337
Calibrate Low	off @ +	off

**WARNING !!!****Do NOT continue  
if making mix!**

Esc - Back to Previous Screen

F10 - Continue

Esc - Escape

F1 - 6 Minute Tests

F2 - Virgin Scale Calibrate by Average

F3 - Virgin Scale Calibrate by Sample

F4 - Virgin Scale Zero / Trac

F6 - Recycle Scale Calibrate by Average

F7 - Recycle Scale Calibrate by Sample

F8 - Recycle Scale Zero / Trac

F10 - Edit Calibration

Virgin Scale

25 % Wet

-1 dryTPH

SPU - 100 ppm

Recycle Scale

20 % Wet

0 dryTPH

SPU - 100 ppm

Message Area

**Aggregate Scales****Virgin Scale****-0.7** wTPH

Threshold	10 TPH
Damping Filter	5 sec
Calibrate Zero	0.0 @ = 14400
Calibrate High	1.475 @ + 17251
Calibrate Mid	+836 @ + 10000
Calibrate Low	+681 @ + 8014

**Recycle Scale****0.1** wTPH

Threshold	10 TPH
Damping Filter	5 sec
Calibrate Zero	0.0 @ = 14342
Calibrate High	+196 @ + 7275
Calibrate Mid	+128 @ + 3337
Calibrate Low	off @ + off

Virgin Scale

25 % Wet

-1 dryTPH

SPU - 100 ppm

Recycle Scale

20 % Wet

0 dryTPH

SPU - 100 ppm

Message Area

Six Minute Scale Check

**357**Seconds to  
Completion

Test In Progress

Esc - Escape

F1 - Restart

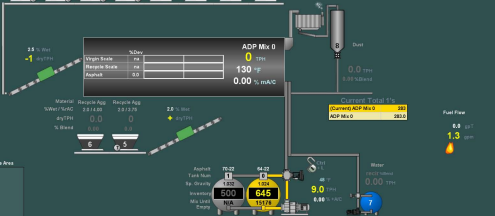
Material	Virgin Agg	Virgin Agg	Virgin Agg	Virgin Agg	Virgin Agg	Virgin Agg	Virgin Agg	Virgin Agg
% Wet	2.5	2.4	2.8	2.5	2.5	2.8	2.4	2.8
dryTPH	0	0	0	0	0	0	0	0
% Blend	0.0	0.0	0.0	0.0	0.0	0.0	0.0	0.0

**Spot Check**

Total Mix	+1225 T
Added A/C	+8892 T
Reclaimed A/C	+8809 T
Total A/C	+8861 T

**Esc - Escape**

**F7 - Lock Totalizers**



Message Area

Material	Virgin Agg	Virgin Agg	Virgin Agg	Virgin Agg	Virgin Agg	Virgin Agg	Virgin Agg	Virgin Agg
% Wet	2.5	2.4	2.8	2.5	2.5	2.8	2.4	2.8
dryTPH	0	0	0	0	0	0	0	0
% Blend	0.0	0.0	0.0	0.0	0.0	0.0	0.0	0.0



**Spot Check**

Total Mix	+1225 T
Added A/C	+8892 T
Reclaimed A/C	+8809 T
Total A/C	+8861 T

**Esc - Escape**

**F3 - Start Totalizers**



		%Dry	
Virgin Scale	na		
Recycle Scale	na		
Asphalt	0.0		

Material	Recycle Agg	Recycle Agg	
%Wet/ %mAC	2.0/14.00	2.0/13.75	2.5 % Wet
dryTPH	0.0	0	+ dryTPH
% Blend	0.00	0.0	



Current Total 1's

(Current) ADP Mix 0	280
ADP Mix 0	280.0

Fuel Flow

0.0 gph

1.3 gpm

Message Area



Material	Virgin Agg	Virgin Agg	Virgin Agg	Virgin Agg	Virgin Agg	Virgin Agg	Virgin Agg	Virgin Agg	Virgin Agg
% Wet	2.5	2.4	2.8	2.5	2.5	2.8	2.4	2.8	2.8
dryTPH	0	0	0	0	0	0	0	0	0
% Blend	0.0	0.0	0.0	0.0	0.0	0.0	0.0	0.0	0.0



2.5 % Wet  
-1 dryTPH

**ADP Mix 0**

0 TPH

131 °F

0.00 % m/A/C

%Dry	
Virgin Scale	na
Recycle Scale	na
Asphalt	0.0

Material	Recycle Agg	Recycle Agg	
%Wet/%mAC	2.0/14.00	2.0/13.75	2.8 % Wet + dryTPH
dryTPH	0.0	0	
% Blend	0.00	0.0	



**System Options**

Virgin aggregate measured	by Scale
Recycle aggregate measured	by Scale
Asphalt temperature	measured by probe
Asphalt blend is a percent of total	mix
Virgin Scale percent wet is	from feeder values
Recycle Scale percent wet is	from feeder values
Moisture is a percent of	wet material weight
Measurements are in	english units

**F10 - Confirm Changes**

**Esc - Cancel Changes**

Current Total 1's

(Current) ADP Mix 0	280
ADP Mix 0	280.0

Fuel Flow

0.0 gph  
**1.3** gph

Message Area

Asphalt Tank Num  
Sp. Gravity  
Inventory  
Mix Unit  
Empty

70-32  
**1**  
1.032  
500  
NA

84-32  
**0**  
1.034  
645  
15178

Oil  
48 °F  
**9.0** TPH  
0.00 % m/A/C

Water  
Recycled  
0.00 TPH

**7**



Material	Virgin Agg	Virgin Agg	Virgin Agg	Virgin Agg	Virgin Agg	Virgin Agg	Virgin Agg	Virgin Agg	Virgin Agg
% Wet	2.5	2.4	2.8	2.5	2.5	2.8	2.4	2.8	2.8
dryTPH	0	0	0	0	0	0	0	0	0
% Blend	0.0	0.0	0.0	0.0	0.0	0.0	0.0	0.0	0.0



**System Options**

Virgin aggregate measured	by Scale
Recycle aggregate measured	by Scale
Asphalt temperature	measured by probe
Asphalt blend is a percent of total	mix
Virgin Scale percent wet is	from feeder values
Recycle Scale percent wet is	from feeder values
Moisture is a percent of	wet material weight
Measurements are in	english units
<b>Esc - Escape</b>	
<b>F10 - Edit</b>	

2.5 % Wet  
-1 dryTPH

**ADP Mix 0**

	%Dry		
Virgin Scale	na		
Recycle Scale	na		
Asphalt	0.0		

0 TPH  
131 °F  
0.00 % m/A/C

Material	Recycle Agg	Recycle Agg	
%Wet/%mAC	2.0/14.00	2.0/13.75	2.0 % Wet
dryTPH	0.0	0	+ dryTPH
% Blend	0.00	0.0	



0.0 TPH  
0.00 % Blend

**Current Total 1's**

(Current) ADP Mix 0	280
ADP Mix 0	280.0

**Fuel Flow**  
0.0 gpt  
1.3 gpm

Message Area

Asphalt Tank Num	TD-32	RD-32	Oil L	Water
1	1030	1034	48 °F	0.00 TPH
Inventory	500	645	9.0 TPH	
Mix Unit Empty	N/A	1517%	0.00 % mAC	

**Setup Data**

- Esc - Escape
- F1 - Date / Time
- F2 - Alarms
- F3 - Delays
- F6 - Data Log Options
- F7 - System Options
- F8 - Feeder Options
- F9 - Datascreen

Material	Virgin Agg	Virgin Agg	Virgin Agg	Virgin Agg	Virgin Agg	Virgin Agg	Virgin Agg	Virgin Agg
% Wet	2.1	2.4	2.8	2.5	2.5	2.8	2.4	2.8
dryTPH	0	0	0	0	0	0	0	0
% Blend	0.0	0.0	0.0	0.0	0.0	0.0	0.0	0.0



2.5 % Wet  
-1 dryTPH

**ADP Mix 0**

0 TPH

131 °F

0.00 % m/A/C

%Dry	
Virgin Scale	na
Recycle Scale	na
Asphalt	0.0

Material	Recycle Agg	Recycle Agg
%Wet / %m/C	2.0 / 4.00	2.0 / 3.75
dryTPH	0.0	0
% Blend	0.00	0.0

2.5 % Wet  
+1 dryTPH



**Current Total 1's**

(Current) ADP Mix 0	280
ADP Mix 0	280.0

**Fuel Flow**

0.0 gpt

1.3 gpm

Message Area



Asphalt Tank Num	TG-02	94-02	Oil L	Water
1	0		48 °F	0.00 TPH
Sp. Gravity	1.032	1.024		
Inventory	500	645	9.0 TPH	
Mix Unit Empty	N/A	1517%	0.00 % m/C	

Material	Virgin Agg	Virgin Agg	Virgin Agg	Virgin Agg	Virgin Agg	Virgin Agg	Virgin Agg	Virgin Agg
% Wet	2.5	2.4	2.8	2.5	2.5	2.8	2.4	2.8
dryTPH	0	0	0	0	0	0	0	0
% Blend	0.0	0.0	0.0	0.0	0.0	0.0	0.0	0.0



**Asphalt 64-22**

Tank Num **0**

Sp. Gravity **1.024**

Inventory **645**

Mix Until Empty **15176**

Add to Tank 0's Inventory

0.000 T

2.5 % Wet  
-1 dryTPH

Material	Recycle Agg	R
%Wet/%AC	2.2/14.00	
dryTPH	0.0	
% Blend	0.00	



Total 1's	
P Mix 0	280
Blend	280.0

Fuel Flow

0.0 gph

1.3 gph

Message Area



Material	Virgin Agg	Virgin Agg	Virgin Agg	Virgin Agg	Virgin Agg	Virgin Agg	Virgin Agg	Virgin Agg
% Wet	2.5	2.4	2.8	2.5	2.5	2.4	2.4	2.8
dryTPH	0	0	0	0	0	0	0	0
% Blend	0.0	0.0	0.0	0.0	0.0	0.0	0.0	0.0

Asphalt Tanks	Tank #	Asphalt	Sp.Gr.	Inventory	Add to Inventory
	Tank 0	64-22	1.824	645	0.000
	Tank 1	76-22	1.832	500	0.000

F10 - Confirm Changes  
Esc - Cancel Changes

2.5 % Wet  
-1 dryTPH

ADP Mix 0	
Virgin Scale	na
Recycle Scale	na
Asphalt	0.0

0 TPH  
130 °F  
0.00 % m/A/C

Material	Recycle Agg	Recycle Agg
%Wet/ %mAC	2.0/14.00	2.0/13.75
dryTPH	0.0	0
% Blend	0.00	0.0

2.0 % Wet  
+ dryTPH

Dust

0.0 TPH  
0.00 % Blend

Current Total 1's  
(Current) ADP Mix 0 280  
ADP Mix 0 280.0

Fuel Flow

0.0 gpt  
1.3 gpm

Message Area

Asphalt Tank Num	76-22	64-22
Sp. Gravity	1.832	1.824
Inventory	500	645
Mix Unit Empty	N/A	15176

48 °F  
9.0 TPH  
0.00 % mAC

Water 0.00 TPH

Material	Virgin Agg	Virgin Agg	Virgin Agg	Virgin Agg	Virgin Agg	Virgin Agg	Virgin Agg	Virgin Agg
% Wet	2.5	2.4	2.8	2.5	2.5	2.4	2.4	2.8
dryTPH	0	0	0	0	0	0	0	0
% Blend	0.0	0.0	0.0	0.0	0.0	0.0	0.0	0.0

**Asphalt Tanks**

Tank #	Asphalt	Sp.Gr.	Inventory
Tank 0	94-22	1.824	645
Tank 1	70-22	1.832	500

F10 - Confirm Changes

Esc - Cancel Changes

2.5 % Wet  
-1 dryTPH

ADP Mix 0	
Virgin Scale	na
Recycle Scale	na
Asphalt	0.0

0 TPH  
130 °F  
0.00 % m/A/C

Material	Recycle Agg	Recycle Agg
%Wet/ %m/C	2.0/14.00	2.0/13.75
dryTPH	0.0	0
% Blend	0.00	0.0

2.0 % Wet  
+1 dryTPH



Current Total 1's

(Current) ADP Mix 0	280
ADP Mix 0	280.0

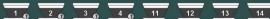
Fuel Flow

0.0 gpt  
1.3 gpm

Message Area



Material	Virgin Agg	Virgin Agg	Virgin Agg	Virgin Agg	Virgin Agg	Virgin Agg	Virgin Agg	Virgin Agg
% Wet	2.5	2.4	2.8	2.5	2.5	2.4	2.4	2.8
dryTPH	0	0	0	0	0	0	0	0
% Blend	0.0	0.0	0.0	0.0	0.0	0.0	0.0	0.0



**Asphalt Tanks**

Tank #	Asphalt	Sp.Gr.	Inventory
Tank 0	64-22	1.034	645
Tank 1	76-22	1.032	500

F10 - Confirm Changes

Esc - Cancel Changes

2.5 % Wet  
-1 dryTPH

**ADP Mix 0**

0 TPH

130 °F

0.00 % m/A/C

%Dry	
Virgin Scale	na
Recycle Scale	na
Asphalt	0.0

Material	Recycle Agg	Recycle Agg
%Wet/ %mAC	2.0/14.00	2.0/13.75
dryTPH	0.0	0
% Blend	0.00	0.0

2.0 % Wet  
+1 dryTPH



**Current Total 1's**

(Current) ADP Mix 0	280
ADP Mix 0	280.0

**Fuel Flow**

0.0 gph  
1.3 gpm

Message Area

Asphalt Tank Num	76-22	64-22
Sp. Gravity	1.032	1.034
Inventory	500	645
Mix Unit Empty	N/A	15176



Material	Virgin Agg	Virgin Agg	Virgin Agg	Virgin Agg	Virgin Agg	Virgin Agg	Virgin Agg	Virgin Agg
% Wet	2.5	2.4	2.8	2.5	2.5	2.4	2.4	2.8
dryTPH	0	0	0	0	0	0	0	0
% Blend	0.0	0.0	0.0	0.0	0.0	0.0	0.0	0.0



**ADP Mix 0**

0 TPH

130 °F

0.00 % m/A/C

%Dry	
Virgin Scale	na
Recycle Scale	na
Asphalt	0.0

Material	Recycle Agg	Recycle Agg
%Wet/ %m/A/C	2.0/14.00	2.0/13.75
dryTPH	0.0	0
% Blend	0.00	0.0



### Asphalt Tanks

Tank #	Asphalt	Sp.Gr.	Inventory
Tank 0	94-22	1.824	645
Tank 1	76-22	1.832	500

- Esc - Escape
- F1 - Add To Inventory
- F2 - Correct Inventory
- F3 - Change Specific Gravity
- F6 - Change Asphalt
- F8 - Go To Asphalt List



Current Total 1's

(Current) ADP Mix 0	280
ADP Mix 0	280.0

Fuel Flow

0.0 gpt

1.3 gpm

Message Area



Material	Virgin Agg	Virgin Agg	Virgin Agg	Virgin Agg	Virgin Agg	Virgin Agg	Virgin Agg	Virgin Agg
% Wet	2.5	2.4	2.8	2.5	2.5	2.8	2.4	2.8
dryTPH	0	0	0	0	0	0	0	0
% Blend	0.0	0.0	0.0	0.0	0.0	0.0	0.0	0.0



- Utilities**
- Esc - Back to Main Screen
  - F1 - Material Totals
  - F2 - Mix Formula Totals
  - F3 - Clear All Total 1's
  - F4 - List Menu
  - F5 - Print Records
  - F6 - Calibration Data and Procedures
  - F7 - Setup Data
  - F10 - XP-100 Options

**ADP Mix 0**

0 TPH

130 °F

0.00 % m/A/C

%Dry	
Virgin Scale	na
Recycle Scale	na
Asphalt	0.0

Material	Recycle Agg	Recycle Agg
%Wet/%mAC	2.0/14.00	2.0/13.75
dryTPH	0.0	0
% Blend	0.00	0.0



**Current Total 1's**

(Current) ADP Mix 0	280
ADP Mix 0	280.0

**Fuel Flow**

0.0 gph

1.3 gpm

**Message Area**

Asphalt Tank Num	70-22	94-22	Water
Sp. Gravity	1.032	1.034	0.00 TPH
Inventory	500	645	
Mix Unit Empty	N/A	15178	

48 °F

9.0 TPH

0.00 % m/A/C



Material	Virgin Agg	Virgin Agg	Virgin Agg	Virgin Agg	Virgin Agg	Virgin Agg	Virgin Agg	Virgin Agg
% Wet	2.5	2.4	2.8	2.5	2.5	2.8	2.4	2.8
dryTPH	0	0	0	0	0	0	0	0
% Blend	0.0	0.0	0.0	0.0	0.0	0.0	0.0	0.0



**Version**

Systems Equipment Corp.  
503 3rd Ave SW  
Wauken, IA 52172 USA

For Support Call: (563) 568-6387  
Copyright © 1987-2010

Job Number	
ADP-100 Version	B10126.x04
Interface Version	2.2.11.287

**Esc - Escape**



Material	Recycle Agg	Recycle Agg	
%Wet/ %mAC	2.0/14.00	2.0/13.75	2.8 % Wet + dryTPH
dryTPH	0.0	0	
% Blend	0.00	0.0	

Current Total 1's

(Current) ADP Mix 0	280
ADP Mix 0	280.0

Fuel Flow

0.0 gph  
**1.3** gph

Message Area



## Virgin Scale Calibration by Average

Virgin Scale

**-0.7** wTPH

Averaged for	3 sec
Average value	-0.6455 wTPH

Threshold	10 TPH
Damping Filter	5 sec

Calibrate Zero	0.0 @ =	14400
Calibrate High	1.475 @ +	17251
Calibrate Mid	+0.836 @ +	10000
Calibrate Low	+0.681 @ +	8014

Virgin Scale

0.0000 - 100.0000

Message Area

Scale Average

If the actual averaged  
value is

**-0.6455** TPH

Then the average  
measured error is

**0.0000** %

F10 - Confirm Changes

Esc - Cancel Changes

F10 - Confirm Changes

Esc - Cancel Changes

### Virgin Scale Calibration by Average

Virgin Scale

**-0.7** wTPH

Averaged for 1 sec

Average value -0.6516 wTPH

Threshold 10 TPH

Damping Filter 5 sec

Calibrate Zero 0.0 @ = 14400

Calibrate High 1.475 @ + 17251

Calibrate Mid +.836 @ + 10000

Calibrate Low +.681 @ + 8014

Virgin Scale

0.00 - 100.000

Message Area

## Virgin Scale Calibration by Average

Virgin Scale

**-0.6 wTPH**

Averaged for	3 sec
Average value	-0.6455 wTPH

Threshold	10 TPH
Damping Filter	5 sec

Calibrate Zero	0.0 @ =	14400
Calibrate High	1.475 @ +	17251
Calibrate Mid	+0.836 @ +	10000
Calibrate Low	+0.681 @ +	8014

Virgin Scale

0.0000 - 100.0000

Message Area

Scale Average

If the actual averaged  
value is

-0.6455 TPH

Then the average  
measured error is

0.0000 %

Esc - Escape

F1 - Edit Actual

F4 - Auto Recalibrate

F8 - Print Calibration

Esc - Escape

F1 - Restart the Averaging Interval

F3 - Zero the Measured Average Value

F8 - Evaluate &amp; Calibrate

F10 - Edit Calibration

## Virgin Scale Calibration by Average

Virgin Scale

**-0.7** wTPH

Averaged for 0 sec

Average value 1.3410 wTPH

Threshold 10 TPH

Damping Filter 5 sec

Calibrate Zero 0.0 @ = 14400

Calibrate High 1.475 @ + 17251

Calibrate Mid +.836 @ + 10000

Calibrate Low +.681 @ + 8014

Virgin Scale

0.00 - 100 TPH

Message Area

Material	Virgin Agg	Virgin Agg	Virgin Agg	Virgin Agg	Virgin Agg	Virgin Agg	Virgin Agg	Virgin Agg
% Wet	2.1	2.4	2.8	2.5	2.5	2.8	2.4	2.8
dryTPH	0	0	0	0	0	0	0	0
% Blend	0.0	0.0	0.0	0.0	0.0	0.0	0.0	0.0



**Virgin Agg**

Measured By:	Speed Sensor
Blended By:	% of Desired Aggregate
Scaled By:	Virgin Scale

2.1 % Wet  
0 TPH  
0.0 % Blend

Virgin Scale  
Recycle Scale  
Asphalt

**1**

Material	Recycle Agg	Recycle
% Wet / %AC	2.2 / 4.00	2.2 / 3
dryTPH	0.0	
% Blend	0.00	



Dust  
0.0 TPH  
0.0 % Blend

Current Total 1's

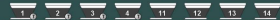
ADP Mix 0	280
Mix 0	280.0

Fuel Flow  
0.0 gph  
**1.3** gph

Message Area

Asphalt Tank Num	70-02	84-02	Oil L	Water
Sp. Gravity	1.032	1.034	48 °F	0.00 TPH
Inventory	500	645	9.0 TPH	
Mix Used	N/A	15176	0.00 % HAC	
Empty				

Material	Virgin Agg	Virgin Agg	Virgin Agg	Virgin Agg	Virgin Agg	Virgin Agg	Virgin Agg	Virgin Agg
% Wet	2.5	2.4	2.8	2.5	2.5	2.4	2.8	2.8
dryTPH	0	0	0	0	0	0	0	0
% Bleed	0.0	0.0	0.0	0.0	0.0	0.0	0.0	0.0



ADP Mix 0

0 TPH

131 °F

0.00 % m/A/C

%Dry	
Virgin Scale	na
Recycle Scale	na
Asphalt	0.0

Material	Recycle Agg	Recycle Agg
%Wet/ %m/C	2.0/14.00	2.0/13.75
dryTPH	0.0	0
% Bleed	0.00	0.0



Message Area

Asphalt Tank Num	70-02	94-02
Sp. Gravity	1.032	1.034
Inventory	500	645
Mix Unit Empty	NA	15176

Current Data	
Virgin Scale	-02 wTPH
@ 2.5 % Wet	-1 dTPH
Raw Data	
Load Cell raw	14368 pps
BeltSpeed raw	100 pps
Error Limit	10.00 %
Error Shutdown	0 sec
Delay to PCI	10 sec
Threshold	10 TPH
Damping Filter	5 sec

Calibrate Zero	0.0 @ =	14398
Calibrate High	1.475 @ +	17251
Calibrate Mid	+ .836 @ +	10000
Calibrate Low	+ .681 @ +	8014

- Virgin Scale Information**
- Esc - Escape
  - F1 - 6 Minute Test
  - F2 - Calibrate by Average
  - F3 - Calibrate by Sample
  - F4 - Zero Track On/Off
  - F6 - Go To Delays
  - F7 - Go To System Options
  - F8 - Go To Material Properties
  - F10 - Edit

Material	Virgin Agg	Virgin Agg	Virgin Agg	Virgin Agg	Virgin Agg	Virgin Agg	Virgin Agg	Virgin Agg
% Wet	2.1	2.4	2.8	2.5	2.5	2.8	2.4	2.8
dryTPH	0	0	0	0	0	0	0	0
% Blend	0.0	0.0	0.0	0.0	0.0	0.0	0.0	0.0



**Test Targets**

Mix:	ADP Mix 0
	0.00 TPH
	10.00 wT

F10 - Confirm Changes  
Esc - Cancel Changes

## Virgin Scale Calibration by Sample

**Virgin Scale**

**-0.6 wTPH**

Totalizer Locked	11.06 wT
Test Time	10 sec

Threshold	10 TPH
Damping Filter	5 sec

Calibrate Zero	0.0 @ =	14400
Calibrate High	1.475 @ +	17251
Calibrate Mid	+ .836 @ +	10000
Calibrate Low	+ .681 @ +	8014

Message Area





Material	Virgin Agg	Virgin Agg	Virgin Agg	Virgin Agg	Virgin Agg	Virgin Agg	Virgin Agg	Virgin Agg
% Wet	2.1	2.4	2.8	2.5	2.5	2.8	2.4	2.8
wTPH	0	0	0	0	0	0	0	0
% Blend	0.0	0.0	0.0	0.0	0.0	0.0	0.0	0.0



Message Area

## Virgin Scale Calibration by Sample

Virgin Scale

**-0.6 wTPH**

Totalizer Locked 11.06 wT

Test Time 10 sec

Threshold 10 TPH

Damping Filter 5 sec

Calibrate Zero 0.0 @ = 14400

Calibrate High 1.475 @ + 17251

Calibrate Mid +.836 @ + 10000

Calibrate Low +.681 @ + 8014

Scale Error

If the actual total is  
**11.050** wTThen the current  
Scale error is  
**0.00** %

F10 - Confirm Changes

Esc - Cancel Changes

Material	Virgin Agg	Virgin Agg	Virgin Agg	Virgin Agg	Virgin Agg	Virgin Agg	Virgin Agg	Virgin Agg
% Wet	2.1	2.4	2.8	2.5	2.5	2.8	2.4	2.8
dryTPH	0	0	0	0	0	0	0	0
% Blend	0.0	0.0	0.0	0.0	0.0	0.0	0.0	0.0



## Virgin Scale Calibration by Sample

Virgin Scale

**-0.6 wTPH**

Totalizer Locked 11.06 wT

Test Time 10 sec

Threshold 10 TPH

Damping Filter 5 sec

Calibrate Zero 0.0 @ = 14400

Calibrate High 1.475 @ + 17251

Calibrate Mid +.836 @ + 10000

Calibrate Low +.681 @ + 8014

Message Area

If the actual total is  
11.058 wT

Then the current  
Scale error is

0.00 %

Scale Error

Truck Calculator

Tare 17440.00 lb

Gross 0.0000 lb

Net 0.0000 T

F10 - Use Truck Net

Esc - Cancel Edit

Material	Virgin Agg	Virgin Agg	Virgin Agg	Virgin Agg	Virgin Agg	Virgin Agg	Virgin Agg	Virgin Agg
% Wet	2.1	2.4	2.8	2.5	2.5	2.8	2.4	2.8
dryTPH	0	0	0	0	0	0	0	0
% Blend	0.0	0.0	0.0	0.0	0.0	0.0	0.0	0.0



## Virgin Scale Calibration by Sample

Virgin Scale

**-0.6 wTPH**

Totalizer Locked 11.06 wT

Test Time 10 sec

Threshold 10 TPH

Damping Filter 5 sec

Calibrate Zero 0.0 @ = 14400

Calibrate High 1.475 @ + 17251

Calibrate Mid +.836 @ + 10000

Calibrate Low +.681 @ + 8014

If the actual total is  
11.058 wT

Then the current  
Scale error is

0.00 %

Esc - Escape

F1 - Edit Actual

F3 - Edit Truck Info

F4 - Auto Recalibrate

F9 - Print Calibration

Truck Calculator

Tare 17440.0 lb

Gross 0.0000 lb

Net 0.0000 T

Message Area

Scale Error

Material	Virgin Agg	Virgin Agg	Virgin Agg	Virgin Agg	Virgin Agg	Virgin Agg	Virgin Agg	Virgin Agg
% Wet	2.1	2.4	2.8	2.5	2.5	2.8	2.4	2.8
dryTPH	0	0	0	0	0	0	0	0
% Blend	0.0	0.0	0.0	0.0	0.0	0.0	0.0	0.0



## Virgin Scale Calibration by Sample

Virgin Scale

**-0.6 wTPH**

Totalizer Locked 11.06 wT

Test Time 10 sec

Threshold 10 TPH

Damping Filter 5 sec

Calibrate Zero 0.0 @ = 14400

Calibrate High 1.475 @ + 17251

Calibrate Mid +.836 @ + 10000

Calibrate Low +.681 @ + 8014

Message Area

### Test Targets

Mix: ADP Mix 0

0.00 TPH

10.00 wT

F10 - Confirm

Esc - Cancel

Material	Virgin Agg	Virgin Agg	Virgin Agg	Virgin Agg	Virgin Agg	Virgin Agg	Virgin Agg	Virgin Agg
% Wet	2.1	2.4	2.8	2.5	2.5	2.8	2.4	2.8
dryTPH	0	0	0	0	0	0	0	0
% Blend	0.0	0.0	0.0	0.0	0.0	0.0	0.0	0.0



## Virgin Scale Calibration by Sample

Virgin Scale

**-0.6 wTPH**

Totalizer Locked	11.06 wT
Test Time	10 sec

Threshold	10 TPH
Damping Filter	5 sec

Calibrate Zero	0.0 @ = 14400
Calibrate High	1.475 @ + 17251
Calibrate Mid	+ .836 @ + 10000
Calibrate Low	+ .681 @ + 8014

### Test Targets

Mix: ADP Mix 0

0.00 TPH

10.00 wT

### Esc - Escape

F2 - Set Up Mix

F3 - Zero Scale

F5 - Change Targets

F6 - Start Test

F8 - Evaluate & Calibrate

F10 - Edit Calibration

Message Area

## Virgin Scale Calibration by Average

Virgin Scale

**-0.7** wTPH

Averaged for 4 sec

Average value -0.6493 wTPH

Threshold 10 TPH

Damping Filter 5 sec

Calibrate Zero 0.0 @ = 14400

Calibrate High 1.475 @ + 17251

Calibrate Mid +.836 @ + 10000

Calibrate Low +.681 @ + 8014

Virgin Scale

0.00 - 100.000

Message Area

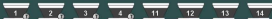
Zero Calibration

Pressing F10 will adjust the meter's "Zero" so that the average value currently displayed will be zeroed.

Esc - Escape

F10 - Zero the Device

Material	Virgin Agg	Virgin Agg	Virgin Agg	Virgin Agg	Virgin Agg	Virgin Agg	Virgin Agg	Virgin Agg
% Wet	2.5	2.4	2.8	2.5	2.5	2.8	2.4	2.8
dryTPH	0	0	0	0	0	0	0	0
% Blend	0.0	0.0	0.0	0.0	0.0	0.0	0.0	0.0



### Virgin Scale

2.5 % Wet  
**-1** dryTPH

%Dry	
Virgin Scale	na
Recycle Scale	na
Asphalt	0.0

Material	Recycle Agg	Recycle Agg
%Wet/%AC	2.0/14.00	2.0/13.75
dryTPH	0.0	0
% Blend	0.00	0.0



Dust

0.0 TPH  
0.00 %Blend

Current Total 1's

(Current) ADP Mix 0	280
ADP Mix 0	280.0

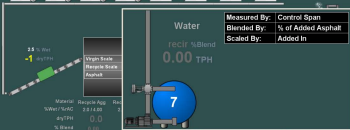
Fuel Flow

0.0 gpt  
**1.3** gpm

Message Area

Asphalt Tank Num	70-22	84-22	Oil	Water
Sp. Gravity	1.032	1.034	48 °F	0.00 TPH
Inventory	500	645	9.0 TPH	
Mix Unit Empty	N/A	15178	0.00 % HVC	

Material	Virgin Agg	Virgin Agg	Virgin Agg	Virgin Agg	Virgin Agg	Virgin Agg	Virgin Agg	Virgin Agg
% Wet	2.5	2.4	2.8	2.5	2.5	2.8	2.4	2.8
dryTPH	0	0	0	0	0	0	0	0
% Blend	0.0	0.0	0.0	0.0	0.0	0.0	0.0	0.0



Material	Recycle Agg	Rec
%Wet/%AC	2.0/14.00	2
dryTPH	0.0	
% Blend	0.00	



Dust

0.0 TPH

%Blend

---

remt Total 1's

ADP Mix 0	280
	280.0

Fuel Flow

0.0 gpt

1.3 gpm

Message Area





Material	Virgin Agg	Virgin Agg	Virgin Agg	Virgin Agg	Virgin Agg	Virgin Agg	Virgin Agg	Virgin Agg
% Wet	2.5	2.4	2.8	2.5	2.5	2.8	2.4	2.8
dryTPH	0	0	0	0	0	0	0	0
% Blend	0.0	0.0	0.0	0.0	0.0	0.0	0.0	0.0



- XP-100 Options**
- Esc - Escape
  - F1 - Show Journal
  - F2 - Backup & Restore ADP Data
  - F3 - Data Maintenance
  - F4 - ADP Configuration Change
  - F5 - Change SQL Settings
  - F6 - Printer Options
  - F7 - Plant Options

2.5 % Wet  
-1 dryTPH

**ADP Mix 0**

0 TPH

131 °F

0.00 % m/A/C

%Dry	
Virgin Scale	na
Recycle Scale	na
Asphalt	0.0

Material	Recycle Agg	Recycle Agg
%Wet/ %mAC	2.0/14.00	2.0/13.75
dryTPH	0.0	0
% Blend	0.00	0.0

2.0 % Wet  
+1 dryTPH



Current Total 1's

(Current) ADP Mix 0	280
ADP Mix 0	280.0

Fuel Flow

0.0 gpt  
1.3 gpm

Message Area

Asphalt  
Tank Num  
Sp. Gravity  
Inventory  
Mix Unit  
Empty

70-22  
1  
1.032  
500  
NA

94-22  
0  
1.024  
645  
15176

Oil  
L  
48 °F  
9.0 TPH  
0.00 % mAC

Water  
pHCT/blend  
0.00 TPH



Material	Virgin Agg	Virgin Agg	Virgin Agg	Virgin Agg	Virgin Agg	Virgin Agg	Virgin Agg	Virgin Agg	Virgin Agg
% Wet	2.5	2.4	2.8	2.5	2.5	2.4	2.4	2.8	2.8
dryTPH	0	0	0	0	0	0	0	0	0
% Bleed	0.0	0.0	0.0	0.0	0.0	0.0	0.0	0.0	0.0



2.5 % Wet  
-1 dryTPH

		%Dry	
Virgin Scale	na		
Recycle Scale	na		
Asphalt	0.0		

ADP Mix 0  
0 TPH  
131 °F  
0.00 % m/A/C

Material	Recycle Agg	Recycle Agg	
%Wet/%mAC	2.0/14.00	2.0/13.75	2.8 % Wet 0 dryTPH
dryTPH	0.0	0	
% Bleed	0.00	0.0	



Message Area



Asphalt Tank Num	1	0	Water	0.00 TPH
Sp. Gravity	1.000	1.000	0.00 gpt	
Inventory	500	645	0.00 gpm	
Mix Unit Empty	N/A	N/A		

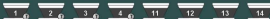
48 °F  
9.0 TPH  
0.00 % m/A/C

**Virgin Scale Information**

Current Data	
Virgin Scale	-73 wTPH
@ 2.5 % Wet	-71 dTPH
Raw Data	
Load Cell raw	14316 pps
BeltSpeed raw	105 pps
Error Limit	10.00 %
Error Shutdown	0 sec
Delay to PCI	10 sec
Threshold	10 TPH
Damping Filter	5 sec
Calibrate Zero	0.0 @ = 14398
Calibrate High	1.475 @ + 17251
Calibrate Mid	+836 @ + 10000
Calibrate Low	+681 @ + 8014

F10 - Confirm Changes  
Esc - Cancel Changes

Material	Virgin Agg	Virgin Agg	Virgin Agg	Virgin Agg	Virgin Agg	Virgin Agg	Virgin Agg	Virgin Agg
% Wet	2.5	2.4	2.8	2.5	2.5	2.4	2.4	2.8
dryTPH	0	0	0	0	0	0	0	0
% Blend	0.0	0.0	0.0	0.0	0.0	0.0	0.0	0.0



### Asphalt Tanks

Tank #	Asphalt	Sp.Gr.	Inventory
Tank 0	(None)	1.800	645
Tank 1	(None)	1.800	500

F10 - Confirm Changes

Esc - Cancel Changes

2.5 % Wet  
-1 dryTPH

**ADP Mix 0**

0 TPH

131 °F

0.00 % m/A/C

%Dry	
Virgin Scale	na
Recycle Scale	na
Asphalt	0.0

Material	Recycle Agg	Recycle Agg
%Wet/ %m/C	2.0/14.00	2.0/13.75
dryTPH	0.0	0
% Blend	0.00	0.0

2.0 % Wet  
+1 dryTPH



### Current Total 1's

(Current) ADP Mix 0	280
ADP Mix 0	280.0

### Fuel Flow

0.0 gpt  
0.0 gpm

Message Area

Asphalt  
Tank Num  
Sp. Gravity  
Inventory  
Mix Unit  
Empty

**1**

(None)

1.800

500

N/A

**0**

(None)

1.800

645

N/A

Oil  
48 °F  
9.0 TPH  
0.00 % m/C

Water  
Recycled  
0.00 TPH



Material	Virgin Agg	Virgin Agg	Virgin Agg	Virgin Agg	Virgin Agg	Virgin Agg	Virgin Agg	Virgin Agg	Virgin Agg
% Wet	2.5	2.4	2.8	2.5	2.5	2.8	2.4	2.8	2.8
dryTPH	0	0	0	0	0	0	0	0	0
% Bleed	0.0	0.0	0.0	0.0	0.0	0.0	0.0	0.0	0.0



2.5 % Wet  
-1 dryTPH

		% Dry		
Virgin Scale	na			
Recycle Scale	na			
Asphalt	0.0			

ADP Mix 0

0 TPH

131 °F

0.00 % m/A/C

Material	Recycle Agg	Recycle Agg	
%Wet/%mAC	2.0/14.00	2.0/13.75	2.8 % Wet
dryTPH	0.0	0	0 dryTPH
% Bleed	0.00	0.0	



### Recycle Scale Information

Current Data	
Recycle Scale	+0.08 wTPH
@ 2.0 % Wet	+0.08 dTPH
Raw Data	
Load Cell raw	14362 pps
BeltSpeed raw	105 pps
Error Limit	10.00 %
Error Shutdown	0 sec
Delay to PCI	2 sec
Threshold	10 TPH
Damping Filter	5 sec
Calibrate Zero	0.0 @ = 14343
Calibrate High	+196 @ + 7275
Calibrate Mid	+120 @ + 3337
Calibrate Low	off @ + off

F10 - Confirm Changes

Esc - Cancel Changes

Message Area



Asphalt Tank Num	(Name)	(Name)	Oil L	Water
1	1000	1000	40 T	0.00 TPH
Inventory	500	645	9.0 TPH	
Mix Unit Empty	N/A	N/A	0.00 % mAC	

0.0 gPT  
0.0 ppm

Material	Virgin Agg	Virgin Agg	Virgin Agg	Virgin Agg	Virgin Agg	Virgin Agg	Virgin Agg	Virgin Agg
% Wet	2.5	2.4	2.8	2.5	2.5	2.8	2.4	2.8
dryTPH	0	0	0	0	0	0	0	0
% Blend	0.0	0.0	0.0	0.0	0.0	0.0	0.0	0.0



2.5 % Wet  
-1 dryTPH

%Dry	
Virgin Scale	na
Recycle Scale	na
Asphalt	0.0

ADP Mix 0  
0 TPH  
131 °F  
0.00 % mAC

Material	Recycle Agg	Recycle Agg
%Wet/%mAC	2.0/14.00	2.0/12.75
dryTPH	0.0	0
% Blend	0.00	0.0

2.0 % Wet  
+ dryTPH

Message Area

Asphalt Tank Num	(Name)	(Name)	Oil L	Water
1	1000	0	48 °F	0.00 TPH
Inventory	500	645	9.0 TPH	0.00 % mAC
Mix Unit Empty	N/A	N/A		

## Virgin 1

Current Data	
Target Rate	0.000 TPH
Measured Rate	0.000 TPH
Measured By	Speed Sensor

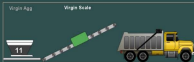
Raw Data	
Tach Output Raw	0 pps
Tach Correction	1.00

Error Limit	25.0 %
Error Shutdown	0 sec
Delay to PDI	12 sec

Control Span Cal	110.0
Cal High	100.0 @ 900.0
Cal Mid	off @ off
Cal Low	off @ off

F10 - Confirm Changes  
Esc - Cancel Changes

Feeder Data Information

**Virgin 11****Automatic Evaluation**

Virgin Scale

**-0.7 wTPH**

Totalizer Locked	-0.002 wT
Test Time	32 sec

Rate wTPH	ByControl %Error	Measured %Error

Control Span Cal	<input type="text" value="100.0"/>		
Calibrate High	100.0 @	900.0	
Calibrate Mid	off @	off	
Calibrate Low	off @	off	

**Test Targets**

Material: Virgin Agg

At	2.5 % wet
High	0 dTPH
Mid	0 dTPH
Low	0 dTPH
to	0.0 wT

F10 - Confirm Changes

Esc - Cancel Changes

Message Area

Material	Virgin Agg	Virgin Agg	Virgin Agg	Virgin Agg	Virgin Agg	Virgin Agg	Virgin Agg	Virgin Agg	Virgin Agg
% Wet	2.5	2.4	2.8	2.5	2.5	2.8	2.4	2.8	2.8
dryTPH	0	0	0	0	0	0	0	0	0
% Blend	0.0	0.0	0.0	0.0	0.0	0.0	0.0	0.0	0.0



2.5 % Wet  
-1 dryTPH

**ADP Mix 0**

0 TPH

131 °F

0.00 % m/A/C

	% Dry		
Virgin Scale	na		
Recycle Scale	na		
Asphalt	0.0		

Material	Recycle Agg	Recycle Agg
% Wet / %AC	2.0 / 4.00	2.0 / 3.75
dryTPH	0.0	0
% Blend	0.00	0.0

2.0 % Wet  
+ dryTPH



Asphalt Skid Information

Current Data	
Asphalt	46 °F
@ 1.000 Sp. Gravity	9.01 TPH
Raw Data	
Asphalt Meter Raw	190 pps
Temperature Raw	19222 pps

Blend Error Limit	+50 %
Blend Error Shutdown	0 sec
Divert Error Shutdown	0 sec
Divert Delay	0 sec

Asphalt Temp Zero	14400
Asphalt Temp Span	628.30

Asphalt Meter Span	300.00
Asphalt Pump TPH Max	90

- F10 - Confirm Changes
- Esc - Cancel Changes

0.0 gPT  
0.0 ppm

Message Area

Asphalt Tank Num  
Sp. Gravity  
Inventory  
Mix Unit  
Empty

**1**

1.000

500

N/A

**0**

1.000

645

N/A

Oil L  
46 °F  
9.0 TPH  
0.00 % m/A/C

Water  
FACT/blend  
0.00 TPH





F10 - Confirm Changes

Esc - Cancel Changes

**Asphalt Pump Skid**

Asphalt Temp

**46 °F**

Asphalt Pump

**9.0 TPH**

Asphalt Temp Zero	14400.0
Asphalt Temp Span	628.300

Asphalt Meter Span	300.000
A/C Pump TPH Max	90

Meter/PumpTach	+
Ratio Filter (sec)	0

Message Area